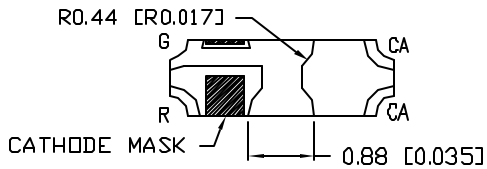
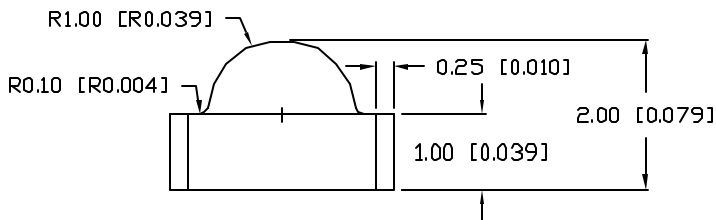
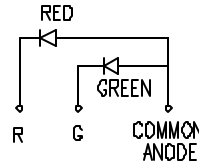
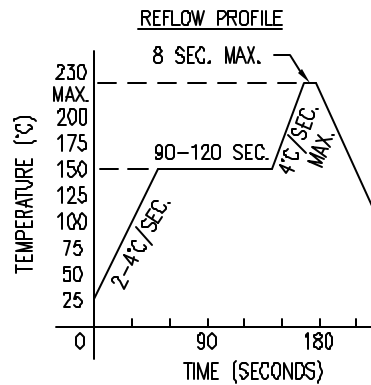


PIN OUT



NOTES:

1. 2,000 PER REEL.



ELECTRO-OPTICAL CHARACTERISTICS $T_A=25^{\circ}\text{C}$ $I_f=20\text{mA}$

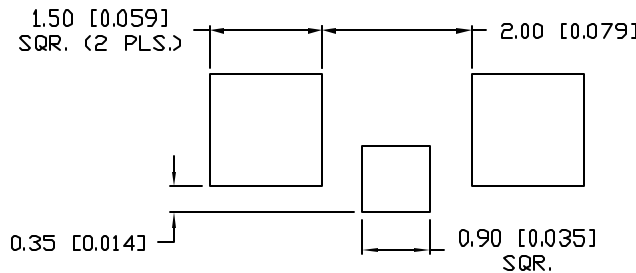
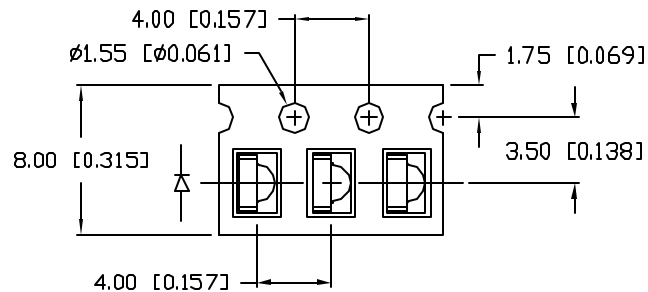
| PARAMETER | MIN | TYP | MAX | UNITS | TEST COND |
|-----------------------|--------------------------------------|-------------|---------|----------------|-----------------------|
| PEAK WAVELENGTH | | 632 (RED) | | nm | |
| | | 574 (GREEN) | | nm | |
| FORWARD VOLTAGE (R/G) | | 2.0/2.1 | 2.4/2.4 | V _f | |
| REVERSE VOLTAGE | 5.0 | | | V _r | I _f =100μA |
| AXIAL INTENSITY (R/G) | | 50/20 | | mcd | I _f =20mA |
| VIEWING ANGLE | | 120 | | 2x theta | |
| EMITTED COLOR: | SUPER HIGH INTENSITY RED/SUPER GREEN | | | | |
| EPOXY LENS FINISH: | WATER CLEAR | | | | |

LIMITS OF SAFE OPERATION AT 25°C PER CHIP

| PARAMETER | COLORS | MAX | UNITS |
|-----------------------|--------|------------|-------|
| PEAK FORWARD CURRENT* | | 160 | mA |
| STEADY CURRENT | (R/G) | 25/30 | mA |
| POWER DISSIPATION | (R/G) | 60/100 | mW |
| DERATE FROM 25°C | | -1.6 | mW/°C |
| OPERATING TEMP. | | -40 TO +85 | °C |
| STORAGE TEMP. | | -40 TO +90 | °C |

* $t < 10\mu\text{s}$

RECOMMENDED SOLDER PAD LAYOUT



CAUTION: MOISTURE SENSITIVE DEVICE

1. SHELF LIFE IN SEALED BAG:
12 MONTHS AT <40°C AND <90% RELATIVE HUMIDITY (RH).
2. AFTER THIS BAG IS OPENED, DEVICES HAVE TO BE MOUNTED WITHIN 48 HOURS OR STORED AT <30% RH.

CAUTION: STATIC SENSITIVE DEVICE

FOLLOW PROPER E.S.D. HANDLING PROCEDURES WHEN WORKING WITH THIS PART.

TAPE FEED DIRECTION →

*UNLESS OTHERWISE SPECIFIED TOLERANCES PER DECIMAL PRECISION ARE: X=±1 (±0.038), XX=±0.5 (±0.020), XXX=±0.25 (±0.010), XXXX=±0.127 (±0.005). LEAD SIZE=±0.05 (0.002), LEAD LENGTH=±0.75 (±0.030). MIN= +DECIMAL PRECISION MAX= +0.00 -DECIMAL PRECISION

REV.

PART NUMBER

SML-LXR851SISUGC-TR

SURFACE MOUNT RIGHT ANGLE LED,
6.32nm RED/574nm GREEN BICOLOR LED, WATER CLEAR LENS.

CONFIDENTIAL INFORMATION

THE INFORMATION CONTAINED IN THIS DOCUMENT IS THE PROPERTY OF LUMEX INC. EXCEPT AS SPECIFICALLY AUTHORIZED IN WRITING BY LUMEX INC, THE HOLDER OF THIS DOCUMENT SHALL KEEP ALL INFORMATION CONTAINED HEREIN CONFIDENTIAL AND SHALL PROTECT SAME IN WHOLE OR IN PART FROM DISCLOSURE AND DISSEMINATION TO ALL THIRD PARTIES.

RELIABILITY NOTE

OUR MANY YEARS OF EXPERIENCE DATA ACCUMULATION INDICATE THAT SOLDER HEAT IS A MAJOR CAUSE OF EARLY AND FUTURE FAILURE. PLEASE PAY ATTENTION TO YOUR SOLDERING PROCESS.



290 E. HELEN ROAD
PALATINE, IL 60067-6976
PHONE: +1.847.359.2790
US WEB: www.lumex.com
TW WEB: www.lumex.com.tw

DRAWN BY:

GB

CHECKED BY:

APPROVED BY:

DATE: 5.22.02

PAGE: 1 OF 1

SCALE: N/A