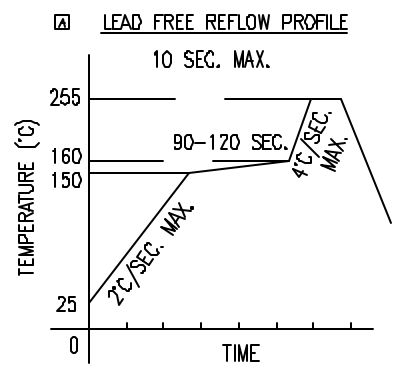
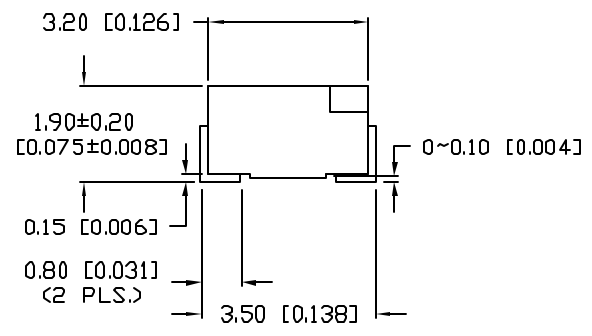
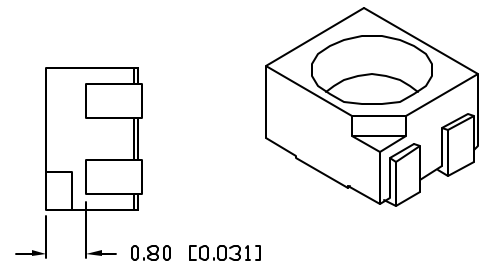
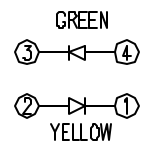
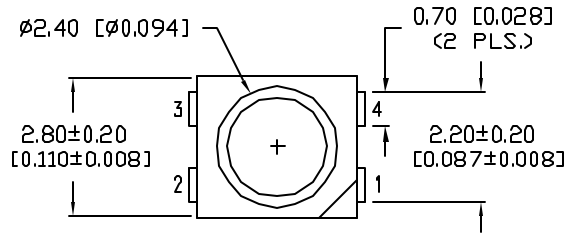
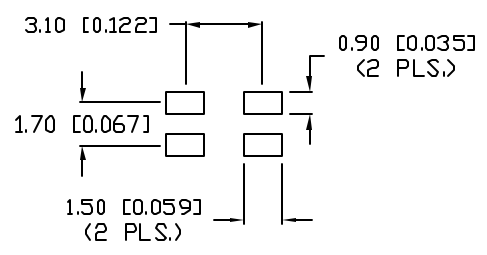
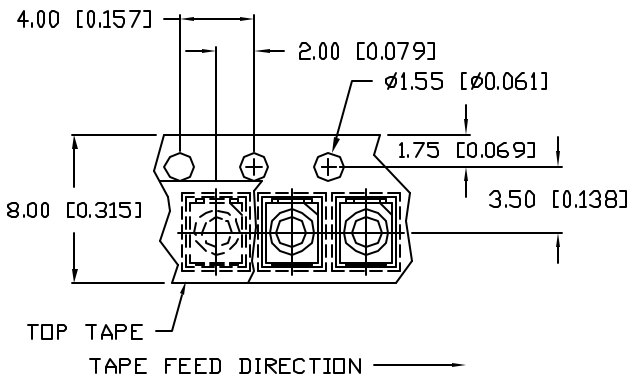


UNCONTROLLED DOCUMENT

| | | |
|--------------------|-------------------------------------|--------|
| PART NUMBER | | REV. |
| SML-LX2832SYSUGCTR | | A |
| REV. | E.C.N. NUMBER AND REVISION COMMENTS | DATE |
| A | E.C.N. #11148. | 2.8.05 |



TOTAL TIME ABOVE 220°C IS 60 SECONDS MAX.
RECOMMENDED SOLDER PAD LAYOUT



ELECTRO-OPTICAL CHARACTERISTICS $T_A=25^\circ\text{C}$ $I_f=20\text{mA}$

| PARAMETER | MIN | TYP | MAX | UNITS | TEST COND |
|-----------------------|--------------|--------------|-----|------------|----------------------|
| PEAK WAVELENGTH | | 590 (YELLOW) | | nm | |
| | | 574 (GREEN) | | nm | |
| FORWARD VOLTAGE | | 2.0 | 2.4 | V_f | |
| REVERSE VOLTAGE | 5.0 | | | V_r | $I_r=100\mu\text{A}$ |
| AXIAL INTENSITY (Y/G) | | 60/25 | | mcd | $I_f=20\text{mA}$ |
| VIEWING ANGLE | | 120 | | $2x$ theta | |
| EMITTED COLOR: | YELLOW/GREEN | | | | |
| EPOXY LENS FINISH: | WATER CLEAR | | | | |

LIMITS OF SAFE OPERATION AT 25°C PER CHIP

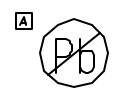
| PARAMETER | COLORS | MAX | UNITS |
|-----------------------|--------|------------|-------|
| PEAK FORWARD CURRENT* | | 160 | mA |
| STEADY CURRENT | | 30 | mA |
| POWER DISSIPATION | | 100 | mW |
| DERATE FROM 25°C | | -1.2 | mW/°C |
| OPERATING TEMP. | | -25 TO +85 | °C |
| STORAGE TEMP. | | -30 TO +85 | °C |

* $t < 10\mu\text{s}$

NOTES:

- THE POLARITY MARK IS ORIENTED TOWARDS THE TAPE SPROCKET HOLE.

CAUTION: MOISTURE SENSITIVE DEVICE
PER JEDEC LEVEL 4 STANDARDS

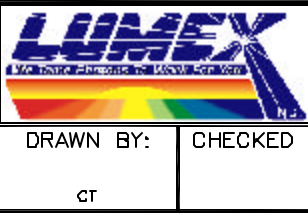


*UNLESS OTHERWISE SPECIFIED TOLERANCES PER DECIMAL PRECISION ARE: X=±1 (±0.039), XX=±0.5 (±0.020), XXX=±0.25 (±0.010), XXXX=±0.127 (±0.005). LEAD SIZE=±0.05 (±0.002), LEAD LENGTH=±0.75 (±0.030), MIN=+0.00, MAX=-0.00

| | |
|---|--------------------|
| REV. | PART NUMBER |
| A | SML-LX2832SYSUGCTR |
| 2.8mm x 3.2mm SURFACE MOUNT WITH REFLECTOR CUP, DUAL CHIP, 590nm AlInGaP YELLOW, 574nm AlInGaP GREEN, WATER CLEAR LENS, 2K PER REEL | |

CONFIDENTIAL INFORMATION
THE INFORMATION CONTAINED IN THIS DOCUMENT IS THE PROPERTY OF LUMEX INC. EXCEPT AS SPECIFICALLY AUTHORIZED IN WRITING BY LUMEX INC, THE HOLDER OF THIS DOCUMENT SHALL KEEP ALL INFORMATION CONTAINED HEREIN CONFIDENTIAL AND SHALL PROTECT SAME IN WHOLE OR IN PART FROM DISCLOSURE AND DISSEMINATION TO ALL THIRD PARTIES.

RELIABILITY NOTE
OUR MANY YEARS OF EXPERIENCE DATA ACCUMULATION INDICATE THAT SOLDER HEAT IS A MAJOR CAUSE OF EARLY AND FUTURE FAILURE. PLEASE PAY ATTENTION TO YOUR SOLDERING PROCESS.



| | |
|---|--------------|
| 290 E. HELEN ROAD PALATINE, IL 60067-6976 PHONE: +1.847.359.2790 US WEB: www.lumex.com TW WEB: www.lumex.com.tw | |
| DRAWN BY: | CHECKED BY: |
| APPROVED BY: | DATE: 5.5.03 |
| | PAGE: 1 OF 1 |
| | SCALE: N/A |