



EVERLIGHT ELECTRONICS CO.,LTD.

Device Number : DDM-282-002 REV: 1.0

2.3" 8*8 Dot Matrix Displays

MODEL NO : ELM-2882EWB/T2 ECN : Page: 1/5

■ Features :

- Large emitting dot 0.2" diameter.
- Low power/high brightness.

■ Applications:

- Instrument panels
- Digital read out display

■ Descriptions :

- The ELM-2882 series is a large emitting area(5.0mm diameter)LED sources configured in a 64 dots 8*8 matrix array.
- These devices are made with white dots and black surface.

PART NO	Chip	
	Material	Emitted Color
ELM-2882EWB/T2	GaAsP/GaP	Orange

OFFICE : NO. 25,Lane 76,Sec.3, Chung Yang Rd., Tucheng 236, Taipei, Taiwan, R.O.C.

TEL : 886-2-2267-2000,2267-9936

FAX : 886-2-2267-6244,22676189,22676306

<http://www.everlight.com>

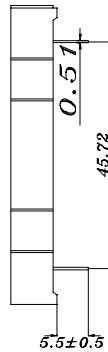
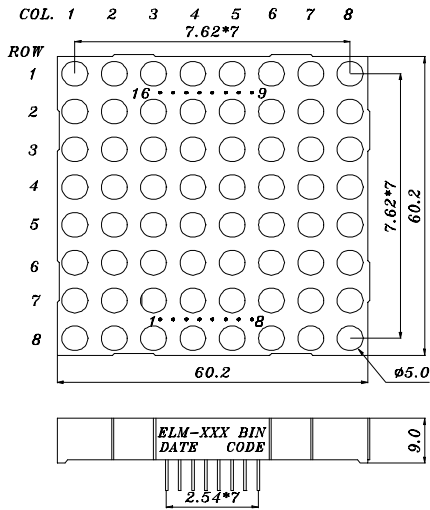
B89061620

T00347

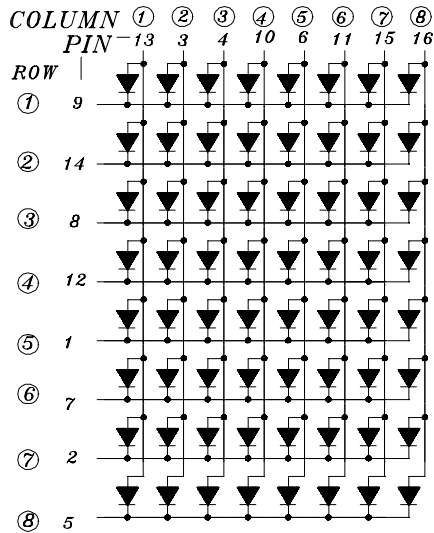


2.3" 8*8 Dot Matrix Displays

Package Dimensions:



- COLUMN ANODE**
ROW CATHODE
- 1 ROW CATHODE 5
 - 2 ROW CATHODE 7
 - 3 COLUMN ANODE 2
 - 4 COLUMN ANODE 3
 - 5 ROW CATHODE 8
 - 6 COLUMN ANODE 5
 - 7 ROW CATHODE 6
 - 8 ROW CATHODE 3
 - 9 ROW CATHODE 1
 - 10 COLUMN ANODE 4
 - 11 COLUMN ANODE 6
 - 12 ROW CATHODE 4
 - 13 COLUMN ANODE 1
 - 14 ROW CATHODE 2
 - 15 COLUMN ANODE 7
 - 16 COLUMN ANODE 8



Notes:

1. All dimensions are in millimeters, tolerance is 0.25mm unless otherwise noted.
 2. Above specification may be changed without notice.
- Supplier will reserve authority on material change for above specification.



2.3" 8*8 Dot Matrix Displays

■ Absolute maximum ratings at Ta = 25°C :

Parameter	Symbol	Rating	Unit
Reverse Voltage	VR	5	V
Forward Current	IF	30	mA
Operating Temperature	Topr	-40 to +85	°C
Storage Temperature	Tstg	-40 to +100	°C
Soldering Temperature	Tsol	260 ± 5	°C
Power Dissipation	Pd	100	mW
Peak Forward Current(Duty 1/10 @ 1KHZ)	IF(Peak)	160	mA

■ Electronic optical characteristics :

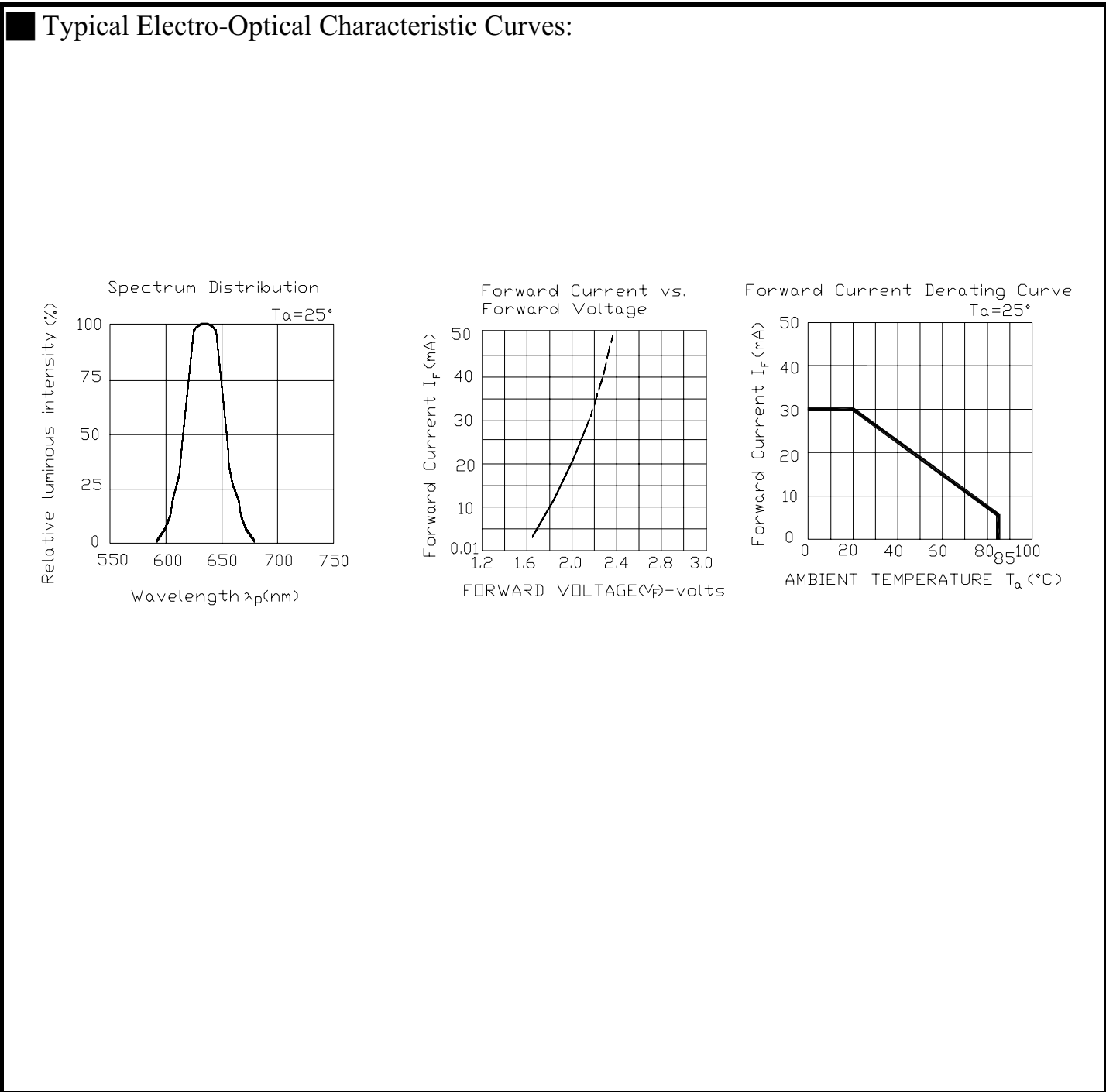
Parameter	Symbol	Min.	Typ.	Max.	Unit	Condition
Luminous Intensity	Iv	0.28	0.56	----	mcd	IF=2mA
Peak Wavelength	λ_p	----	635	----	nm	IF=20mA
Dominant Wavelength	λ_d	----	625	----	nm	IF=20mA
Spectrum Radiation Bandwidth	$\Delta \lambda$	----	45	----	nm	IF=20mA
Forward Voltage	VF	1.7	2.0	2.4	V	IF=20mA
Reverse Current	IR	----	----	10	μA	VR=5V



Device Number : DDM-282-002 REV: 1.0

2.3" 8*8 Dot Matrix Displays

MODEL NO: ELM-2882EWB/T2 ECN : _____ Page: 4/5





EVERLIGHT ELECTRONICS CO.,LTD.

Device Number : DDM-282-002 REV: 1.0

2.3" 8*8 Dot Matrix Displays

MODEL NO : ELM-2882EWB/T2 ECN : Page: 5/5

■ Reliability test items and conditions:

NO	Item	Test Conditions	Test Hours/Cycle	Sample Size	Ac/Re
1	Solder Heat	TEMP : 260°C ± 5 °C	5 SEC	76 PCS	0/1
2	Temperature Cycle	H : +85°C 30min ∫ 5 min L : -55°C 30min	50 CYCLE	76 PCS	0/1
3	Thermal Shock	H : +100°C 5min ∫ 10 sec L : -10°C 5min	50 CYCLE	76 PCS	0/1
4	High Temperature Storage	TEMP : 100°C	1000 HRS	76 PCS	0/1
5	Low Temperature Storage	TEMP : -55°C	1000 HRS	76 PCS	0/1
6	DC Operating Life	IF = 10 mA	1000 HRS	76 PCS	0/1
7	High Temperature / High Humidity	85°C /85% RH	1000 HRS	76 PCS	0/1

--	--	--	--	--	--