



EVERLIGHT ELECTRONICS CO.,LTD.

Device Number DDM-288-025 REV: 1.0

2.3" 8*8 Dot Matrix Displays

MODEL NO : ELM-2882EGWB ECN : Page: 1/5

■ Features :

- Large emitting dot0.2"diameter.
- Low power/high brightness.

■ Applications:

- Instrument panels
- Digital readout display

■ Description :

- The ELM-2882 series are a large large emitting area(5.0mm diameter)LED sources configured in a 64 dots 8*8 matrix array.
- These device is made with white dots and black surface.

PART NO	CHIP		C.C. or C.A.
	Material	Emitted Color	
ELM-2882EGWB	E	GaAsP/GaP	C.A.
	G	GaP	
		Orange	
		Green	

OFFICE : NO. 25,Lane 76,Sec.3, Chung Yang Rd., Tucheng 236, Taipei, Taiwan, R.O.C.

TEL : 886-2-2267-2000,2267-9936

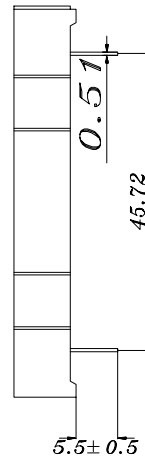
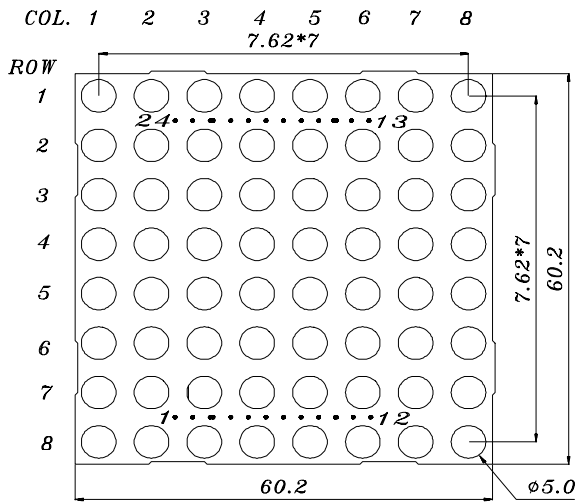
FAX : 886-2-2267-6244,22676189,22676306

<http://www.everlight.com>

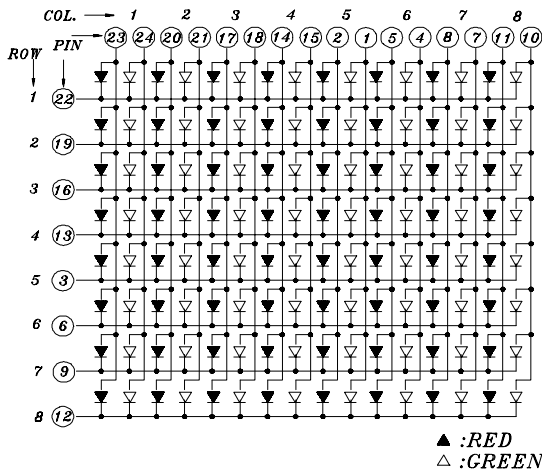
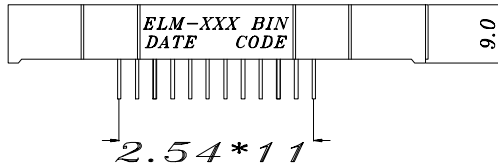


2.3" 8*8 Dot Matrix Displays

Package Dimension:



- COLUMN ANODE
ROW CATHODE
- 1 COLUMN ANODE 5(G)
 - 2 COLUMN ANODE 5(E)
 - 3 ROW CATHODE 5
 - 4 COLUMN ANODE 6(G)
 - 5 COLUMN ANODE 6(E)
 - 6 ROW CATHODE 6
 - 7 COLUMN ANODE 7(G)
 - 8 COLUMN ANODE 7(E)
 - 9 ROW CATHODE 7
 - 10 COLUMN ANODE 8(G)
 - 11 COLUMN ANODE 8(E)
 - 12 ROW CATHODE 8
 - 13 ROW CATHODE 4
 - 14 COLUMN ANODE 4(E)
 - 15 COLUMN ANODE 4(G)
 - 16 ROW CATHODE 3
 - 17 COLUMN ANODE 3(E)
 - 18 COLUMN ANODE 3(G)
 - 19 ROW CATHODE 2
 - 20 COLUMN ANODE 2(E)
 - 21 COLUMN ANODE 2(G)
 - 22 ROW CATHODE 1
 - 23 COLUMN ANODE 1(E)
 - 24 COLUMN ANODE 1(G)
- E=RED G=GREEN



NOTES:

- 1.All dimensions are millimeters , tolerance is 0.25mm unless otherwise noted.
 - 2.Above specification may be changed without notice.
- Supplier will reserve authority on material change for above specification.



2.3" 8*8 Dot Matrix Displays

■ Absolute maximum ratings at Ta = 25°C :

Parameter	Symbol	Rating	Unit
Reverse Voltage	Vr	5	V
Forward Current	If	30	mA
Operating Temperature	Topr	-40 to +85	°C
Storage Temperature	Tstg	-40 to +100	°C
Soldering Temperature	Tsol	260 ± 5	°C
Power Dissipation	Pd	100	mW
Peak Forward Current(Duty 1/10 @ 1KHZ)	If(Peak)	160	mA

■ Electronic optical characteristics :

Parameter	Symbol	MIN.	TYP.	MAX.	Unit	Condition	
Luminous Intensity	Iv	E	2.0	3.2	----	mcd	If=10mA
		G	2.8	4.0	----		
Peak Wavelength	λ p	E	----	635	----	nm	If=20mA
		G	----	565	----		
Dominant Wavelength	λ d	E	----	625	----	nm	If=20mA
		G	----	570	----		
Spectrum Radiation Bandwidth	△ λ	E	----	45	----	nm	If=20mA
		G	----	30	----		
Forward Voltage	Vf	E	1.7	2.0	2.6	V	If=20mA
		G	1.7	2.1	2.4		
Reverse Current	Ir	----	----	10	V	Vr=5V	



EVERLIGHT ELECTRONICS CO.,LTD.

Device Number : DDM-288-025 REV: 1.0

2.3" 8*8 Dot Matrix Displays

MODEL NO : ELM-2882EGWB ECN : _____ Page: 4/5

Reliability test item and condition:

NO	Item	Test Conditions	Test Hours/Cycle	Sample Size	Ac/Re
1	Solder Heat	TEMP : 260°C ± 5 °C	5 SEC	76 PCS	0/1
2	Temperature Cycle	H : +85°C 30min ∫ 5 min L : -55°C 30min	50 CYCLE	76 PCS	0/1
3	Thermal Shock	H : +100°C 5min ∫ 10 sec L : -10°C 5min	50 CYCLE	76 PCS	0/1
4	High Temperature Storage	TEMP : 100°C	1000 HRS	76 PCS	0/1
5	Low Temperature Storage	TEMP : -55°C	1000 HRS	76 PCS	0/1
6	DC Operating Life	If = 10 mA	1000 HRS	76 PCS	0/1
7	High Temperature / High Humidity	85°C/85% RH	1000 HRS	76 PCS	0/1

--	--	--	--	--	--



2.3" 8*8 Dot Matrix Displays

