



Device Number : DDF-512-048 REV: 1.0

0.56" Quadruple Digit Displays

MODEL NO : ELF-512SYGWA/S530-E2 ECN : _____ Page: 1/5

■ Features :

- Industrial standard size.
- Low power consumption.
- Categorized for luminous intensity.

■ Applications:

- Audio equipment
- Instrument panels
- Digital read out display

■ Descriptions :

- The ELF-512 series is a large 14.22mm (0.56")high seven segment display designed for viewing distances up to 7 meters.
- These displays provide excellent reliability in bright ambient light.
- These devices are made with white segments and gray surface.

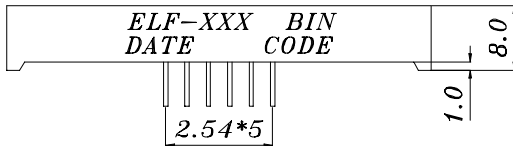
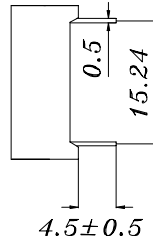
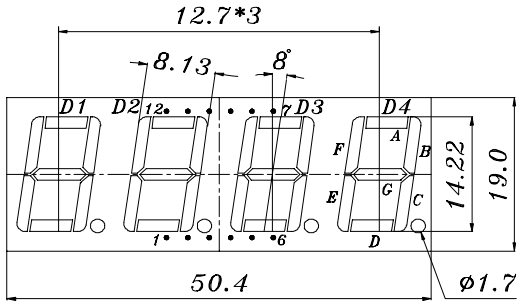
PART NO	Chip	
	Material	Emitted Color
ELF-512SYGWA/S530-E2	AlGaInP	Super Yellow Green

OFFICE : NO. 25,Lane 76,Sec.3, Chung Yang Rd., Tucheng 236, Taipei, Taiwan, R.O.C.
 TEL : 886-2-2267-2000,2267-9936 B89051285
 FAX : 886-2-2267-6244,22676189,22676306 T00267
<http://www.everlight.com>

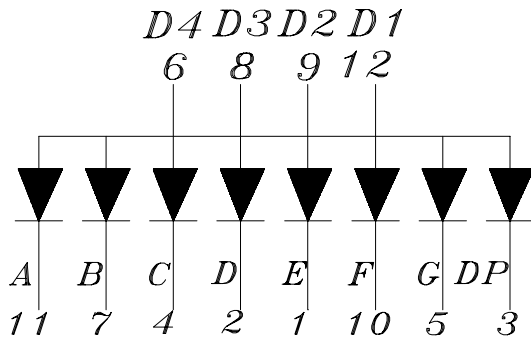


0.56" Quadruple Digit Displays

■ Package Dimensions:



- COMMON ANODE
- 1. CATHODE E
 - 2. CATHODE D
 - 3. CATHODE DP
 - 4. CATHODE C
 - 5. CATHODE G
 - 6. COMMON ANODE D4
 - 7. CATHODE B
 - 8. COMMON ANODE D3
 - 9. COMMON ANODE D2
 - 10. CATHODE F
 - 11. CATHODE A
 - 12. COMMON ANODE D1



■ Notes:

- 1. All dimensions are in millimeters, tolerance is 0.25mm unless otherwise noted.
 - 2. Above specification may be changed without notice.
- Supplier will reserve authority on material change for above specification.



EVERLIGHT ELECTRONICS CO.,LTD.

Device Number : DDF-512-048 REV: 1.0

0.56" Quadruple Digit Displays

MODEL NO : ELF-512SYGWA/S530-E2 ECN : _____ Page: 3/5

■ Absolute maximum ratings at Ta = 25°C :

Parameter	Symbol	Rating	Unit
Reverse Voltage	VR	5	V
Forward Current	IF	25	mA
Operating Temperature	Topr	-40 to +85	°C
Storage Temperature	Tstg	-40 to +100	°C
Soldering Temperature	Tsol	260 ± 5	°C
Electrostatic Discharge	ESD	2000	V
Power Dissipation	Pd	60	mW
Peak Forward Current(Duty 1/10 @ 1KHZ)	IF(Peak)	160	mA

■ Electronic optical characteristics :

Parameter		Symbol	Min.	Typ.	Max.	Unit	Condition
Luminous	Per segment	Iv	0.4	0.8	----	mcd	IF=2mA
			2.0	4.0	----		IF=10mA
Intensity	Per decimal point		0.15	0.30	----	mcd	IF=2mA
			0.6	1.0	----		IF=10mA
Peak Wavelength		λp	----	575	----	nm	IF=20mA
Dominant Wavelength		λd	----	573	----	nm	IF=20mA
Spectrum Radiation Bandwidth		$\Delta \lambda$	----	20	----	nm	IF=20mA
Forward Voltage		VF	----	2.0	2.4	V	IF=20mA
Reverse Current		IR	----	----	10	μA	VR=5V



EVERLIGHT ELECTRONICS CO.,LTD.

Device Number : DDF-512-048 REV: 1.0

0.56" Quadruple Digit Displays

MODEL NO : ELF-512SYGWA/S530-E2 ECN: Page: 4/5

■ Reliability test items and conditions:

NO	Item	Test Conditions	Test Hours/Cycle	Sample Size	Ac/Re
1	Solder Heat	TEMP : 260°C ± 5 °C	5 SEC	76 PCS	0/1
2	Temperature Cycle	H : +85°C 30min ∫ 5 min L : -55°C 30min	50 CYCLE	76 PCS	0/1
3	Thermal Shock	H : +100°C 5min ∫ 10 sec L : -10°C 5min	50 CYCLE	76 PCS	0/1
4	High Temperature Storage	TEMP : 100°C	1000 HRS	76 PCS	0/1
5	Low Temperature Storage	TEMP : -55°C	1000 HRS	76 PCS	0/1
6	DC Operating Life	IF = 10 mA	1000 HRS	76 PCS	0/1
7	High Temperature / High Humidity	85°C/85% RH	1000 HRS	76 PCS	0/1

--	--	--	--	--	--



0.56" Quadruple Digit Displays

MODEL NO: ELF-512SYGWA/S530-E2 ECN : _____

Typical Electro-Optical Characteristic Curves:

