



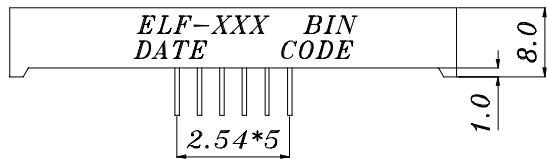
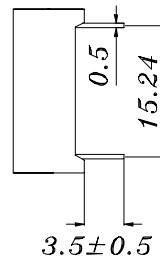
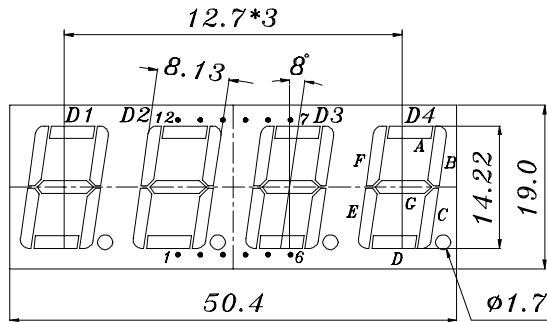
EVERLIGHT ELECTRONICS CO.,LTD.

Device Number : CDDF-512-020 REV: 1

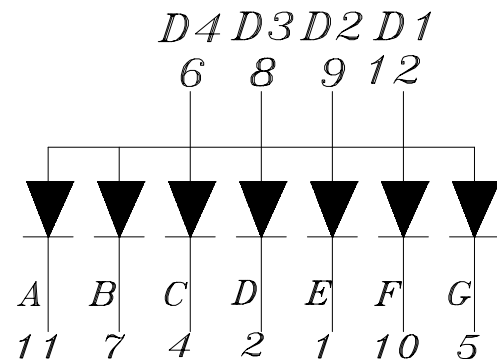
0.56" Quadruple Digit Displays

PART NO. : ELF-512GWB/S362 ECN : _____ Page: 2/5

Package Dimensions:



- COMMON ANODE*
1. CATHODE E
 2. CATHODE D
 3. NO CONNECT
 4. CATHODE C
 5. CATHODE G
 6. COMMON ANODE D4
 7. CATHODE B
 8. COMMON ANODE D3
 9. COMMON ANODE D2
 10. CATHODE F
 11. CATHODE A
 12. COMMON ANODE D1



Notes:

1. All dimensions are in millimeters, tolerance is 0.25mm unless otherwise noted.
2. Above specification may be changed without notice.

Supplier will reserve authority on material change for above specification.



Device Number : CDDF-512-020 REV: 1

0.56" Quadruple Digit Displays

PART NO. : ELF-512GWB/S362 ECN : Page: 3/5

■ Absolute maximum ratings at Ta = 25°C :

Parameter	Symbol	Rating	Unit
Reverse Voltage	VR	5	V
Forward Current	IF	30	mA
Operating Temperature	Topr	-40 to +85	°C
Storage Temperature	Tstg	-40 to +100	°C
Soldering Temperature	Tsol	260 ± 5	°C
Power Dissipation	Pd	100	mW
Peak Forward Current(Duty 1/10 @ 1KHZ)	IF(Peak)	160	mA

■ Electronic optical characteristics :

Parameter		Symbol	Min.	Typ.	Max.	Unit	Condition
Luminous Intensity	Per segment	Iv	1.4	2.8	----	mcd	IF=10mA
	Per decimal point		----	----	----		
Peak Wavelength		λ_p	----	565	----	nm	IF=20mA
Dominant Wavelength		λ_d	----	570	----	nm	IF=20mA
Spectrum Radiation Bandwidth		$\Delta \lambda$	----	30	----	nm	IF=20mA
Forward Voltage		VF	1.7	2.1	2.4	V	IF=20mA
Reverse Current		IR	----	----	10	μA	VR=5V



EVERLIGHT ELECTRONICS CO.,LTD.

Device Number : CDDF-512-020

REV: 1

0.56" Quadruple Digit Displays

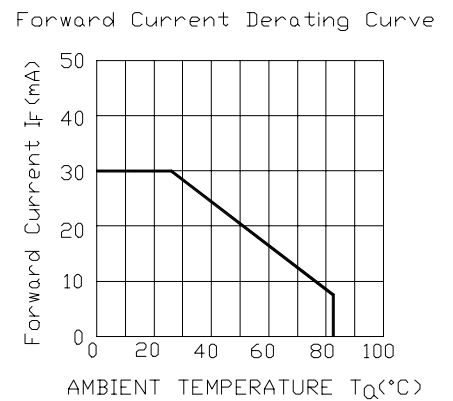
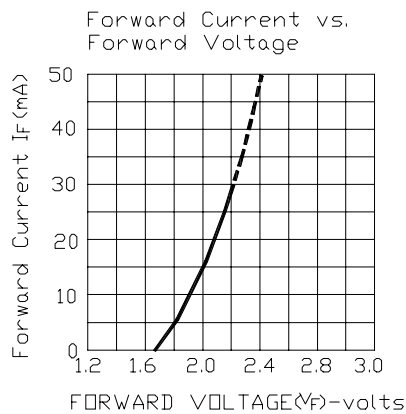
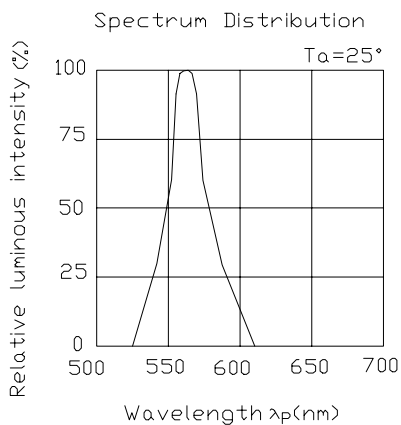
PART NO. : ELF-512GWB/S362

ECN :

Page: 4/5

Typical Electro-Optical Characteristic Curves:

GHIP Material:Gap
Emitted Color:Yellow Green





EVERLIGHT ELECTRONICS CO.,LTD.

Device Number : CDDF-512-020 REV: 1

0.56" Quadruple Digit Displays

PART NO. : ELF-512GWB/S362 ECN : Page: 5/5

■ Reliability test items and conditions:

NO	Item	Test Conditions	Test Hours/Cycle	Sample Size	Ac/Re
1	Solder Heat	TEMP : 260°C ± 5 °C	5 SEC	76 PCS	0/1
2	Temperature Cycle	H : +85°C 30min ∫ 5 min L : -55°C 30min	50 CYCLE	76 PCS	0/1
3	Thermal Shock	H : +100°C 5min ∫ 10 sec L : -10°C 5min	50 CYCLE	76 PCS	0/1
4	High Temperature Storage	TEMP : 100°C	1000 HRS	76 PCS	0/1
5	Low Temperature Storage	TEMP : -55°C	1000 HRS	76 PCS	0/1
6	DC Operating Life	IF = 10 mA	1000 HRS	76 PCS	0/1
7	High Temperature / High Humidity	85°C /85% RH	1000 HRS	76 PCS	0/1

--	--	--	--	--	--