

Technical Data Sheet

Top View LEDs (Height 1.2mm)

50-215BUMC/XXXXXXXX/TR8-T

Features

- Top view white LED
- White SMT package
- Lead frame package with individual 2 pins
- Wide viewing angle
- Soldering methods: IR reflow soldering
- Pb-free
- The product itself will remain within RoHS compliant version.



Descriptions

- Due to the package design, 50-215B has wide viewing angle, low power consumption and white LEDs are devices that are materialized by combing blue chips and special phosphor. This feature makes the LED ideal for light guide application.

Applications

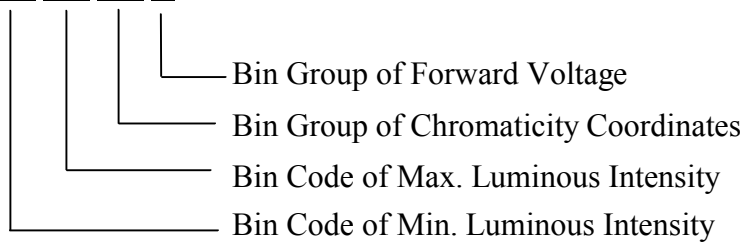
- LCD Back Light
- Mobile Phones
- Indicators
- Illuminations
- Switch Lights

Device Selection Guide

Chip	Emitted Color	Resin Color
Material		
InGaN	Pure White	Water Clear

Coding

50-215BUMC/XX XX XX X/TR8-T

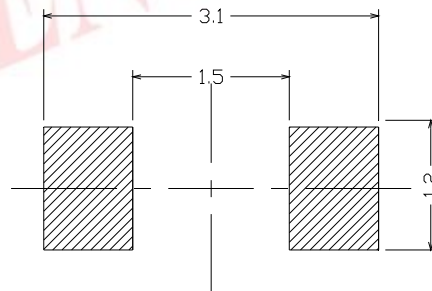
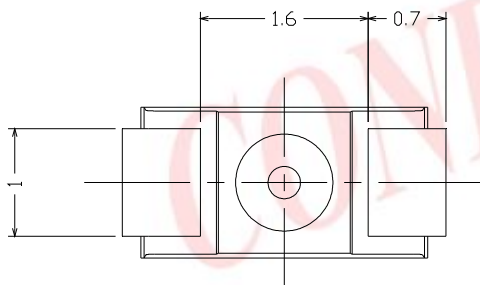
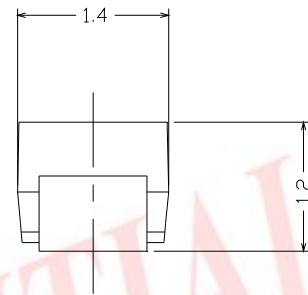
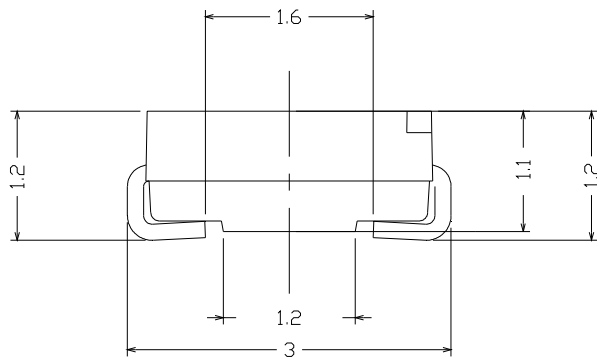
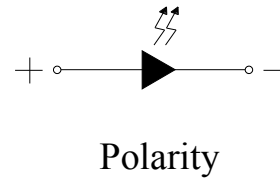
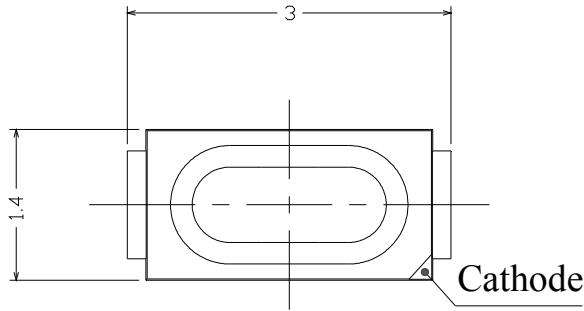


Technical Data Sheet

Top View LEDs (Height 1.2mm)

50-215BUMC/XXXXXXXX/TR8-T

Package Outline Dimensions



Recommended soldering pad design

Note: The tolerances unless dimension are $\pm 0.1\text{mm}$.

**Technical Data Sheet****Top View LEDs (Height 1.2mm)****50-215BUMC/XXXXXXXX/TR8-T****Absolute Maximum Ratings (Ta=25)**

Parameter	Symbol	Rating	Unit
Reverse Voltage	V _R	5	V
DC Forward Current	I _F	30	mA
Pulse Forward Current (Duty 1/10 @1KHz)	I _{FP}	100	mA
Power Dissipation	P _d	110	mW
Electrostatic Discharge(HBM) ^{*1}	ESD	2000	V
LED Junction Temperature	T _j	125	
Operating Temperature	T _{opr}	-30 ~ +100	
Storage Temperature	T _{stg}	-40 ~ +100	
Soldering Temperature	T _{sol}	Reflow Soldering: 260 for 10 sec. Hand Soldering: 350 for 3 sec.	

Note: The products are sensitive to static electricity and must be carefully taken when handling products.



Technical Data Sheet

Top View LEDs (Height 1.2mm)

50-215BUMC/XXXXXXXX/TR8-T

Electro-Optical Characteristics (Ta=25)

Parameter	Symbol	Min.	Typ.	Max.	Unit	Condition
Luminous Intensity	I _V	1400	---	2400	mcd	I _F =20mA
Forward Voltage	V _F	2.95	---	3.55	volt	
Viewing Angle	2θ _{1/2}	---	120	---	deg	
Reverse Current	I _R	---	---	50	μA	V _R =5V

Notes: 1. Tolerance of Luminous Intensity: ± 11%

2. Tolerance of Forward Voltage: ± 0.05V

CONFIDENTIAL



LIGHTING FOREVER

Technical Data Sheet

Top View LEDs (Height 1.2mm)

50-215BUMC/XXXXXXXX/TR8-T

Bin Range of Luminous Intensity

Bin Code	Min.	Max.	Unit	Condition
26	1400	1450	mcd	I _F =20mA
27	1450	1500		
28	1500	1550		
29	1550	1600		
30	1600	1650		
31	1650	1700		
32	1700	1750		
33	1750	1800		
34	1800	1850		
35	1850	1900		
36	1900	1950		
37	1950	2000		
38	2000	2050		
39	2050	2100		
40	2100	2150		
41	2150	2200		
42	2200	2300		
43	2300	2400		

Note: Tolerance of Luminous Intensity: ±11%



Technical Data Sheet

Top View LEDs (Height 1.2mm)

50-215BUMC/XXXXXXXX/TR8-T

Bin Range of Forward Voltage

Group								Bin Code	Min.	Max.	Unit	Condition		
0	1			4	5	6	7	6-1	2.95	3.05	V	I _F =20mA		
								6-2	3.05	3.15				
		2	3			4	5	6	8	7-1			3.15	3.25
										7-2			3.25	3.35
										8-1			3.35	3.45
	2	3			4	5	6	8	8-2	3.45			3.55	

Note: Tolerance of Forward Voltage: ± 0.05V

Group	Bin Code	Min.	Max.	Unit	Condition
9	6-11	3.00	3.05	V	I _F =20mA
	6-2	3.05	3.15		
	7-1	3.15	3.25		
	7-2	3.25	3.35		
	8-1	3.35	3.45		
	8-11	3.45	3.50		

Note: Tolerance of Forward Voltage: ± 0.05V

Group	Bin Code	Min.	Max.	Condition
A	6-1-1	2.95	3.00	I _F =20mA
	6-1-2	3.00	3.05	
	6-2-1	3.05	3.10	
	6-2-2	3.10	3.15	
	7-1-1	3.15	3.20	
	7-1-2	3.20	3.25	
	7-2-1	3.25	3.30	
	7-2-2	3.30	3.35	
	8-1-1	3.35	3.40	
	8-1-2	3.40	3.45	

Note: Tolerance of Forward Voltage: ± 0.05V



Technical Data Sheet

Top View LEDs (Height 1.2mm)

50-215BUMC/XXXXXXXX/TR8-T

Bin Range of Forward Voltage

Group									Bin Code	Min.	Max.	Unit	Condition	
L	N	B	C	K	H	E	Q	F	R	5-1-3	2.80	2.90	V	I _F =20mA
										5-2-3	2.90	3.00		
		6-1-3	3.00	3.10										
	6-2-3	3.10	3.20											
	7-1-3	3.20	3.30											
	7-2-3	3.30	3.40											
	8-1-3	3.40	3.50											

Note: Tolerance of Forward Voltage: ± 0.05V

CONFIDENTIAL

**Technical Data Sheet****Top View LEDs (Height 1.2mm)****50-215BUMC/XXXXXXXX/TR8-T****Bin Range of Chromaticity Coordinates Block****(I_F=20mA)**

Group	Range	I _v Rank*	Group	Range	I _v Rank*
01	B5-1,B5-2,B5-3,B5-4	37	27	A0-2, A0-1, A0-3	35
02	B5-1~B5-4,A0-2,A0-4	37	28	A0-2, A0-4, A0-3	35
07	B5-1,B5-3,A0-4	36	29	A0-2, B5-1, B5-3	36
08	A0-2,A0-3,A0-4	35	30	A0-2, A0-4, B5-3	36
09	A0-1,A0-3,A0+4	34	31	B5-1, A0-2, A0-4	36
10	A0+1, A0+2, A0-1	34	32	B5-1, B5-3, A0-4	36
11	A0+2, A0-1, A0-2	35	33	B5-1, B5-2, B5-4	37
12	A0-1, A0-2, B5-1	36	34	B5-1, B5-3, B5-4	37
13	A0-2, B5-1, B5-2	37	35	B5-2, B5-1, B5-3	37
14	A0+3, A0+4, A0-3	34	36	B5-2, B5-4, B5-3	37
15	A0+4, A0-3, A0-4	36	37	B5-1, B5-2	37
16	A0-3, A0-4, B5-3	36	38	A0-1, A0-3	34
17	A0-4, B5-3, B5-4	37	39	A0-2,A0-4,B5-1,B5-3	36
18	A0+1, A0+2, A0+4	33	40	A0-3,A0-4	35
19	A0+1, A0+3, A0+4	33	41	A0-4,B5-1,B5-3,B5-4	37
20	A0+2, A0+1, A0+3	33	42	A0-4, B5-3	36
21	A0+2, A0-1, A0-3	34	43	B5-2,B5-4	37
22	A0+2, A0+4, A0-3	34	44	A0-1,A0-2,A-4,B5-3	36
23	A0-1, A0+2, A0+4	34	45	B5-1, B5-3	36
24	A0-1, A0-3, A0+4	34	46	A0+1, A0+2	33
25	A0-1, A0-2, A0-4	35	47	B6-1, B6-2, B6-3, B6-4	39

Note: The I_v rank is the highest one for relative bin range of chromaticity coordinates.

**Technical Data Sheet****Top View LEDs (Height 1.2mm)****50-215BUMC/XXXXXXXX/TR8-T****Bin Range of Chromaticity Coordinates Block****(I_F=20mA)**

Group	Range	I _v Rank*	Group	Range	I _v Rank*
48	B6-2,B6-4	39	68	A0+4-R, A0-3, A0-4-L	34
49	A0-2, B5-1, B5-3, B5-4	37	69	B5-1,B5-2,B5-3,B5-4 sub-division	36
50	A0-1~A0-4, B5-1~B5-4	37	70	A0+4-2, A0+4-4, A0-3 (sub-division), A0-4-1, A0-4-3	34
51	A0-1, A0-3, A0-4-1,A0-4-3	35	71	A0-3 sub-division, A0-4 sub-division	35
52	A0+3, A0+4	33	72	A0+1 ~ +4, A0-1 ~ -4, B5-1 ~ -4, B6-1 ~ -4	39
53	B6-1, B6-2, B6-3	39	73	A0-4, B5-1, B5-3 sub-division	36
54	B6-1, B6-3	39	74	A0-4	35
55	B5-2, B5-4, B6-1, B6-3	38	75	B5-2	37
56	B5-2, B6-1	38	76	A0-1~A0-4;B5-1~B5-4	37
57	A0-2, B5-1	36	77	B5-3, B5-4 sub-division	37
58	A0-1, A0-2	35	78	A0-3,A0+4	34
59	A0-1, A0-2, A0-3, A0-4, B5-1	36	79	B5-1,2,3,4 & B6-3 sub-division	39
60	A0+2, A0+4, A0-1, A0-3	34	80	A0-3, A0-4, B5-3 sub-division	37
61	B5-2-1~B5-2-4, 6-1-1~B6-1-4	38	81	A0-3,A0-4,B5-3	37
62	B5-3, B5-4	38	82	A0-1~A0-4,A0+2,A0+4	34
63	A0-1~A0-4, B5-1, B5-3	37	83	B5-4,B6-3	39
64	A0-2, A0-4	36	84	B6-1,B6-2	39
65	A0-2, A0-3, A0-4, B5-3 ^{*3}	35	85	A0-4, B5-2, B5-3, B5-4	37
66	A0-3-1~A0-3-4, A0-4-1~A0-4-4	35	86	B5-1~5-4 & B6-1~ B6-4 sub-division	39
67	A0-1, A0-3,A0-4,A0+2	35	87	B5-3	37

Note: The I_v rank is the highest one for relative bin range of chromaticity coordinates.

**Technical Data Sheet****Top View LEDs (Height 1.2mm)****50-215BUMC/XXXXXXXX/TR8-T****Bin Range of Chromaticity Coordinates Block****(I_F=20mA)**

Group	Range	I _V Rank*	Group	Range	I _V Rank*
88	B5-2-3/ B5-2-4/ B5-4(sub-division)/ B6-1-2/ B6-1-3/ B6-1-4/ B6-3(sub-division)/ B6-4-1	39	A2	B6-2,B6-3,B6-4	40
89	A0-4, B5-3 sub-division	37	A3	B5-2, B5-4, B6-3	39
90	A0-4-R, B5-3 sub-division	37	A4	A0-1,A0-2,A0-4 subdivision	35
91	A0-3-2, A0-3-4, A0-4(sub-division), B5-3-1,B5-3-3	37	A5	A0-2,A0-4,B5-3 subdivision	36
92	B5-2 , B6-1-1, B6-4-1, B5-3-2, B6-1-3, B6-4-3, B6-1-4, B6-4-4, B5-4, B6-3	39	A6	A0-4-R, B5-3, B5-4-L	37
93	A0+4,A0-3 (sub-division)	34	A7	B6-2 , B6-4, C0-1, C0-3	40
94	A0-4-R, B5-3, B5-4 subdivision	37	A8	B5-1,B5-3,B5-4 subdivision	37
95	B5-4, B6-3 subdivision	39	A9	A0-1,A0-2,A0-3,A0-4 subdivision	35
96	A0-4, B5-3, B5-4 subdivision	37	C0	C0-1,C0-2,C0-3,C0-4	40
97	B6-1,B6-3,B6-4	39	A	A0+1, A0+2, A0+3, A0+4	34
98	A0+1~A0+4;A0-1~A0-4;B5-1~B5-4; B6-1~B6-4; NA0-3~NB6-3(Entire district)	38	B	A0+4, A-3, A0-4	34
99	B5-2,B5-4,B6-1,B6-3 subdivision	39	C	A0-1, A0-2, A0-3, A0-4	35
A1	A0+1,A0+2 subdivision	33	-----	-----	-----

Note: The I_V rank is the highest one for relative bin range of chromaticity coordinates.

**Technical Data Sheet****Top View LEDs (Height 1.2mm)****50-215BUMC/XXXXXXXX/TR8-T****Bin Range of Chromaticity Coordinates Block****($I_F=20mA$)**

Group	Range	I_V Rank*
S1	NA0-3,NA0-4,NB5-3,NB5-4,NB6-3,A0-3a,A0-3b,A0-4a,A0-4b,B5-3a,B5-3b,B5-4a,B5-4b,B6-3a,B6-3b	39
S2	NA0-3,NA0-4, A0-3a,A0-3b,A0-4a,A0-4b	35
S3	NB5-3,NB5-4, B5-3a,B5-3b,B5-4a,B5-4b	37
S4	NA0-4,NB5-3	36
S5	NB5-3,NB5-4	37
S6	NA0-4,B5-3b,NB5-3	37
S7	NA0-3,NA0-4 subdivision	36
S8	NA0-4,NB5-3,NB5-4 subdivision	37
S9	NA0-5,NB5-4 subdivision	37
SA	NA0-4,NB5-3,NB5-4 subdivision	37
SB	NA0-3,NA0-4,NB5-3,NB5-4, NB6-3 subdivision	37
SC	NA0-4, NB5-3	36
SD	NA0-4-R, NB5-3, NB5-4-L subdivision	36
SE	NA0-4, A0-4b, NB5-3, B5-3b	36
SF	NB5-3-R, NB5-4, NB6-3-L	38
SG	NA0-4, NB5-3 subdivision	37
SH	A0-4a-L,A0-4a-R,B5-3a-L,B5-3a-R,NA0-4-1,NA0-4-2,NB5-3-1,NB5-3-2	36
SK	NA0-4,NB5-3,NB5-4,A0-4a,B5-3a,B5-3b,B5-4b	36
SL	NA0-3, A0-3b, NA0-4, A0-4b	35
SM	NA0-3, NA0-4	35
SN	NA0-3-2,NA0-3-4, NA0-4 subdivision,B5-3-1,B5-3-3	36
SP	NA0+4-2,NA0+4-4,NA0-3 subdivision,NA0-4-1,NA0-4-3	33
SU	NB5-4,NB6-3	38

Note: The I_V rank is the highest one for relative bin range of chromaticity coordinates.



Technical Data Sheet

Top View LEDs (Height 1.2mm)

50-215BUMC/XXXXXXXX/TR8-T

Chromaticity Coordinates of Bin Code

Bin Code	CIE_x	CIE_y	Bin Code	CIE_x	CIE_y
NA0-3-1	0.2760	0.2530	NA0-3-2	0.2805	0.2600
	0.2720	0.2580		0.2770	0.2650
	0.2770	0.2650		0.2820	0.2720
	0.2805	0.2600		0.2850	0.2670
NA0-3-3	0.2760	0.2530	NA0-3-4	0.2805	0.2600
	0.2800	0.2480		0.2840	0.2550
	0.2760	0.2530		0.2805	0.2600
	0.2805	0.2600		0.2850	0.2670
A0-3b-1	0.2840	0.2550	A0-3b-2	0.2880	0.2620
	0.2800	0.2480		0.2840	0.2550
	0.2830	0.2440		0.2870	0.2510
	0.2800	0.2480		0.2840	0.2550
A0-4a-1	0.2820	0.2720	A0-4a-2	0.2865	0.2795
	0.2793	0.2755		0.2840	0.2836
	0.2840	0.2836		0.2887	0.2916
	0.2865	0.2795		0.2910	0.2870
A0-3a	0.2720	0.2580	-----		
	0.2793	0.2755			
	0.2820	0.2720			
	0.2720	0.2580			

Note: Tolerance of Chromaticity Coordinates: ±0.01



Technical Data Sheet

Top View LEDs (Height 1.2mm)

50-215BUMC/XXXXXXXX/TR8-T

Chromaticity Coordinates of Bin Code

Bin Code	CIE_x	CIE_y	Bin Code	CIE_x	CIE_y
NA0-4-1	0.2850	0.2670	NA0-4-2	0.2893	0.2743
	0.2820	0.2720		0.2865	0.2795
	0.2865	0.2795		0.2910	0.2870
	0.2893	0.2743		0.2935	0.2815
NA0-4-3	0.2850	0.2670	NA0-4-4	0.2893	0.2743
	0.2880	0.2620		0.2920	0.2690
	0.2850	0.2670		0.2893	0.2743
	0.2893	0.2743		0.2935	0.2815
A0-4b-1	0.2920	0.2690	A0-4b-2	0.2960	0.2760
	0.2880	0.2620		0.2920	0.2690
	0.2910	0.2580		0.2945	0.2645
	0.2880	0.2620		0.2920	0.2690
B5-3a-1	0.2910	0.2870	B5-3a-2	0.2950	0.2940
	0.2887	0.2916		0.2928	0.2987
	0.2928	0.2987		0.2968	0.3058
	0.2950	0.2940		0.2990	0.3010
NB5-3-1	0.2935	0.2815	NB5-3-2	0.2975	0.2885
	0.2910	0.2870		0.2950	0.2940
	0.2950	0.2940		0.2990	0.3010
	0.2975	0.2885		0.3015	0.2955

Note: Tolerance of Chromaticity Coordinates: ±0.01



Technical Data Sheet

Top View LEDs (Height 1.2mm)

50-215BUMC/XXXXXXXX/TR8-T

Chromaticity Coordinates of Bin Code

Bin Code	CIE_x	CIE_y	Bin Code	CIE_x	CIE_y
NB5-3-3	0.2935	0.2815	NB5-3-4	0.2975	0.2885
	0.2960	0.2760		0.3000	0.2830
	0.2935	0.2815		0.2975	0.2885
	0.2975	0.2885		0.3015	0.2955
B5-3b-1	0.3000	0.2830	B5-3b-2	0.3040	0.2900
	0.2960	0.2760		0.3000	0.2830
	0.2980	0.2710		0.3021	0.2782
	0.2960	0.2760		0.3000	0.2830
B5-4a-1	0.2990	0.3010	B5-4a-2	0.3030	0.3080
	0.2968	0.3058		0.3008	0.3128
	0.3008	0.3128		0.3048	0.3198
	0.3030	0.3080		0.3070	0.3150
NB5-4-1	0.3015	0.2955	NB5-4-2	0.3055	0.3025
	0.2990	0.3010		0.3030	0.3080
	0.3030	0.3080		0.3070	0.3150
	0.3055	0.3025		0.3095	0.3095
NB5-4-3	0.3015	0.2955	NB5-4-4	0.3055	0.3025
	0.3040	0.2900		0.3080	0.2970
	0.3015	0.2955		0.3055	0.3025
	0.3055	0.3025		0.3095	0.3095

Note: Tolerance of Chromaticity Coordinates: ±0.01



Technical Data Sheet

Top View LEDs (Height 1.2mm)

50-215BUMC/XXXXXXXX/TR8-T

Chromaticity Coordinates of Bin Code

Bin Code	CIE_x	CIE_y	Bin Code	CIE_x	CIE_y
B5-4b-1	0.3080	0.2970	B5-4b-2	0.3120	0.3040
	0.3040	0.2900		0.3080	0.2970
	0.3062	0.2853		0.3080	0.2970
	0.3040	0.2900		0.3055	0.3025
B6-3a-1	0.3070	0.3150	B6-3a-2	0.3110	0.3220
	0.3048	0.3198		0.3088	0.3268
	0.3088	0.3268		0.3128	0.3338
	0.3110	0.3220		0.3150	0.3290
NB6-3-1	0.3070	0.3150	NB6-3-2	0.3110	0.3220
	0.3095	0.3095		0.3135	0.3165
	0.3070	0.3150		0.3110	0.3220
	0.3110	0.3220		0.3150	0.3290
NB6-3-3	0.3135	0.3165	NB6-3-4	0.3175	0.3235
	0.3095	0.3095		0.3135	0.3165
	0.3120	0.3040		0.3160	0.3110
	0.3095	0.3095		0.3135	0.3165
B6-3b-1	0.3135	0.3165	B6-3b-2	0.3175	0.3235
	0.3160	0.3110		0.3200	0.3180
	0.3120	0.3040		0.3160	0.3110
	0.3142	0.2993		0.3182	0.3063

Note: Tolerance of Chromaticity Coordinates: ±0.01



Technical Data Sheet

Top View LEDs (Height 1.2mm)

50-215BUMC/XXXXXXXX/TR8-T

Bin Code of Chromaticity Coordinates

Bin Code	CIE_x	CIE_y	Bin Code	CIE_x	CIE_y
A0+1	0.2569	0.2528	A0+3	0.2652	0.2429
	0.2498	0.2385		0.2584	0.2283
	0.2584	0.2283		0.2666	0.2185
	0.2652	0.2429		0.2733	0.2333
A0+2	0.2640	0.2670	A0+4	0.2720	0.2575
	0.2569	0.2528		0.2652	0.2429
	0.2652	0.2429		0.2733	0.2333
	0.2720	0.2575		0.2800	0.2480
A0-1	0.2720	0.2575	A0-3	0.2800	0.2480
	0.2640	0.2670		0.2720	0.2575
	0.2755	0.2810		0.2818	0.2715
	0.2818	0.2715		0.2879	0.2619
A0-2	0.2818	0.2715	A0-4	0.2879	0.2619
	0.2755	0.2810		0.2818	0.2715
	0.2870	0.2950		0.2915	0.2855
	0.2915	0.2855		0.2960	0.2760

Note: Tolerance of Chromaticity Coordinates: ±0.01



Technical Data Sheet

Top View LEDs (Height 1.2mm)

50-215BUMC/XXXXXXXX/TR8-T

Bin Code of Chromaticity Coordinates

Bin Code	CIE_x	CIE_y	Bin Code	CIE_x	CIE_y
B5-1	0.2915	0.2855	B5-3	0.2960	0.2760
	0.2870	0.2950		0.2915	0.2855
	0.2970	0.3050		0.3003	0.2950
	0.3003	0.2950		0.3035	0.2850
B5-2	0.3003	0.2950	B5-4	0.3035	0.2850
	0.2970	0.3050		0.3003	0.2950
	0.3070	0.3150		0.3090	0.3045
	0.3090	0.3045		0.3110	0.2940
B6-1	0.3090	0.3045	B6-3	0.3110	0.2940
	0.3070	0.3150		0.3090	0.3045
	0.3185	0.3270		0.3195	0.3165
	0.3195	0.3165		0.3205	0.3060
B6-2	0.3195	0.3165	B6-4	0.3205	0.3060
	0.3185	0.3270		0.3195	0.3165
	0.3300	0.3390		0.3300	0.3285
	0.3300	0.3285		0.3300	0.3180

Note: Tolerance of Chromaticity Coordinates: ±0.01

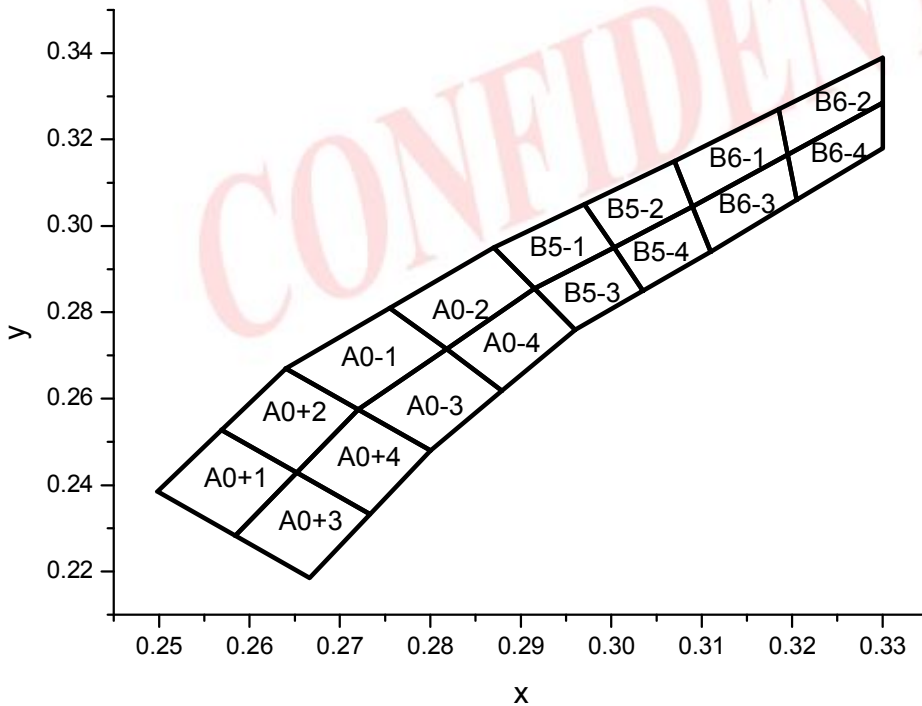
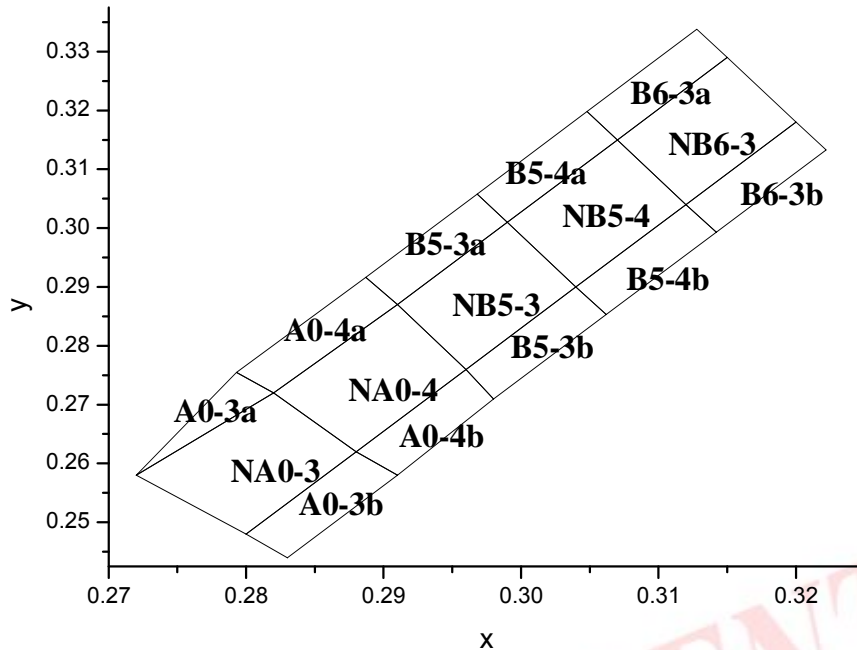


Technical Data Sheet

Top View LEDs (Height 1.2mm)

50-215BUMC/XXXXXXXX/TR8-T

The C.I.E. 1931 Chromaticity Diagram

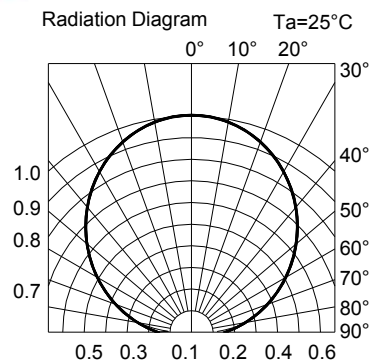
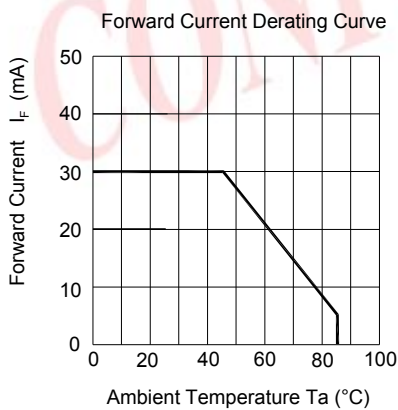
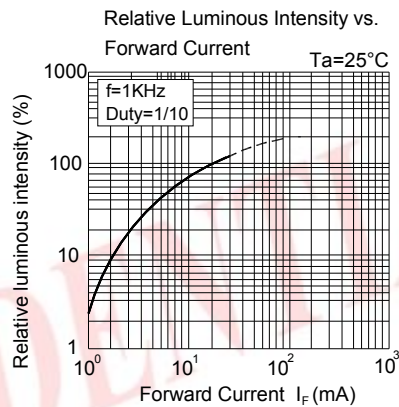
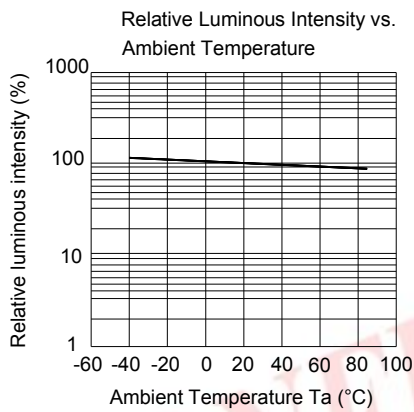
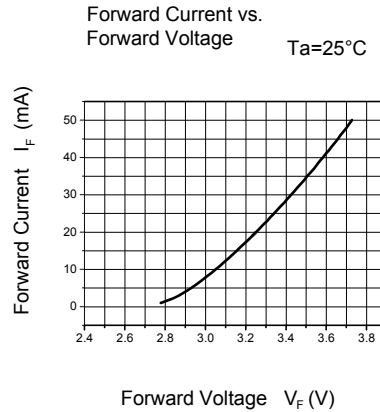
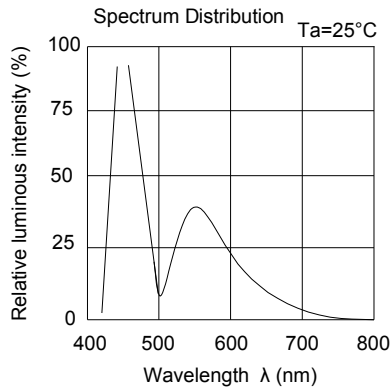


Technical Data Sheet

Top View LEDs (Height 1.2mm)

50-215BUMC/XXXXXXXX/TR8-T

Typical Electro-Optical Characteristics Curves





LIGHTING FOREVER

Technical Data Sheet

Top View LEDs (Height 1.2mm)

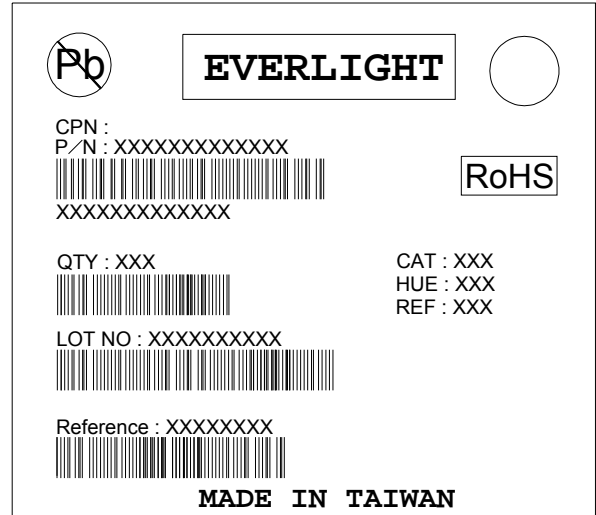
50-215BUMC/XXXXXXXX/TR8-T

Label Explanation

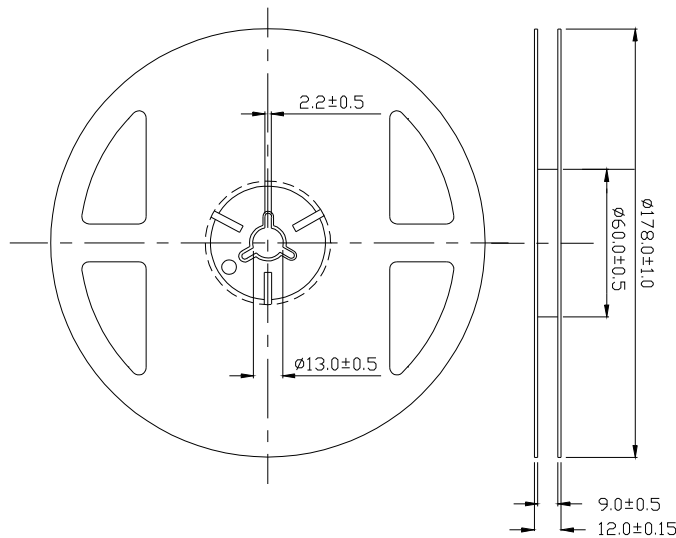
CAT: Luminous Intensity Rank

HUE: Chromaticity Coordinates

REF: Forward Voltage Rank



Reel Dimensions



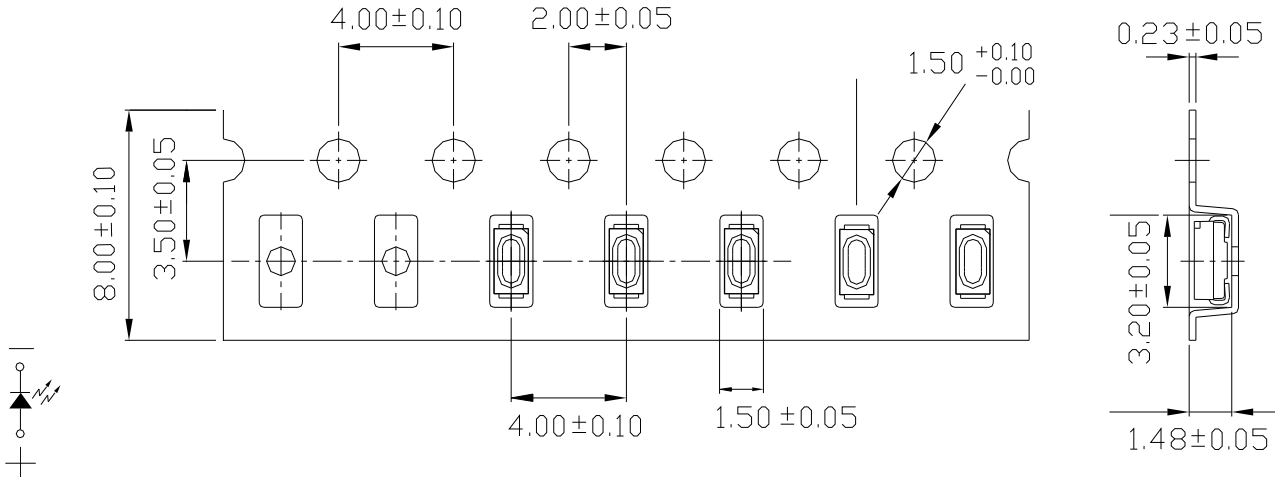
Note: The tolerances unless dimension are ± 0.1mm.

Technical Data Sheet

Top View LEDs (Height 1.2mm)

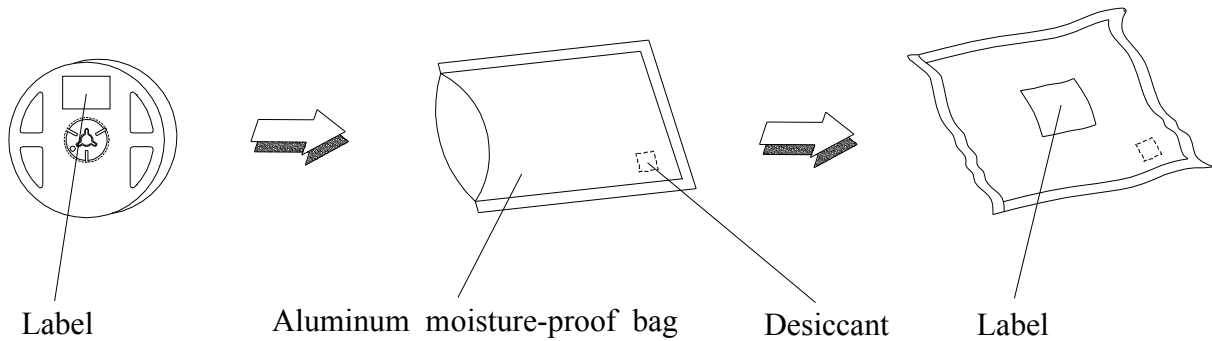
50-215BUMC/XXXXXXXX/TR8-T

Carrier Tape Dimensions: Loaded Quantity 2000 pcs. Per Reel



Note: The tolerances unless dimension are ± 0.1mm.

Moisture Resistant Packaging





Technical Data Sheet

Top View LEDs (Height 1.2mm)

50-215BUMC/XXXXXXXX/TR8-T

Reliability Test Items and Conditions

The reliability of products shall be satisfied with items listed below.

Confidence level: 90%

LTPD: 10%

No.	Items	Test Condition	Test Hours/Cycles	Sample Qty'	Ac/Re
1	Reflow Soldering	Temp.: 260 ±5 Max. 10 sec.	6 Min.	22 pcs.	0/1
2	Temperature Cycle	H: +100 15min. ↓ 5 min. L: -40 15min.	300 cycles	22 pcs.	0/1
3	Thermal Shock	H: +100 5min. ↓ 10 sec. L: -10 5min.	300 cycles	22 pcs.	0/1
4	High Temperature Storage	Temp.: 100 ±5	1000 hrs.	22 pcs.	0/1
5	Low Temperature Storage	Temp.: -40 ±5	1000 hrs.	22 pcs.	0/1
6	DC Operating Life	I _F = 20 mA / 25	1000 hrs.	22 pcs.	0/1
7	High Temperature / High Humidity	85 ±5 / 85%RH	1000 hrs.	22 pcs.	0/1

Technical Data Sheet**Top View LEDs (Height 1.2mm)****50-215BUMC/XXXXXXXX/TR8-T****Precautions for Use**

1. Over-current-proof

Customer must apply resistors for protection; otherwise slight voltage shift will cause big current change (Burn out will happen).

2. Storage

2.1 Don't open moisture proof bag before the products are ready to use.

2.2 Before opening the package: The LEDs should be kept at 30 °C or less and 90%RH or less.

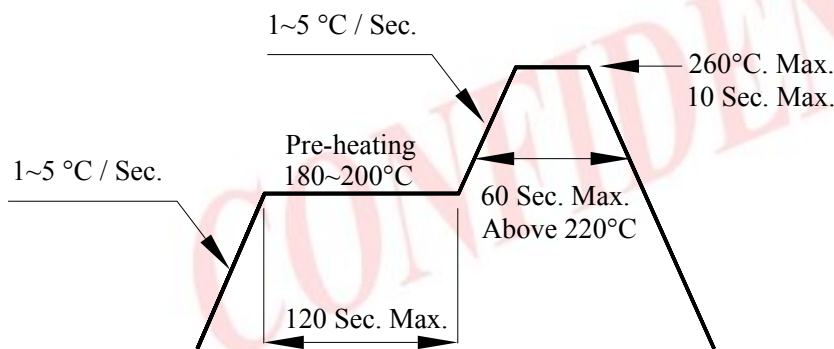
2.3 After opening the package: The LED's floor life are 72 hours under 30 °C or less and 60% RH or less. If unused LEDs remain, it should be stored in moisture proof packages.

2.4 If the moisture absorbent material (silica gel) has faded away or the LEDs have exceeded the storage time, baking treatment should be performed using the following conditions.

baking treatment: 60±5 °C for 24 hours

3. Soldering Condition

3.1 Pb-free solder temperature profile:



3.2 Reflow soldering should not be done more than two times.

3.3 When soldering, do not put stress on the LEDs during heating.

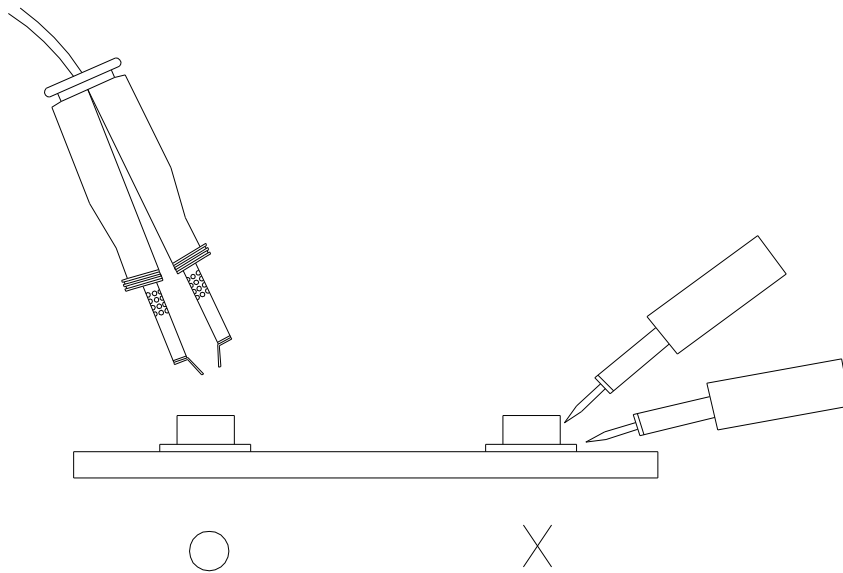
3.4 After soldering, do not warp the circuit board.

Technical Data Sheet**Top View LEDs (Height 1.2mm)****50-215BUMC/XXXXXXXX/TR8-T****4. Soldering Iron**

Each terminal is to go to the tip of soldering iron temperature less than 350 for 3 seconds within once in less than the soldering iron capacity 25W. Leave two seconds and more intervals, and do soldering of each terminal. Be careful because the damage of the product is often started at the time of the hand solder.

5. Repairing

Repair should not be done after the LEDs have been soldered. When repairing is unavoidable, a double-head soldering iron should be used (as below figure). It should be confirmed beforehand whether the characteristics of the LEDs will or will not be damaged by repairing.



EVERLIGHT ELECTRONICS CO., LTD.
Office: No 25, Lane 76, Sec 3, Chung Yang Rd,
Tucheng, Taipei 236, Taiwan, R.O.C

Tel: 886-2-2267-2000, 2267-9936
Fax: 886-2267-6244, 2267-6189, 2267-6306
<http://www.everlight.com>