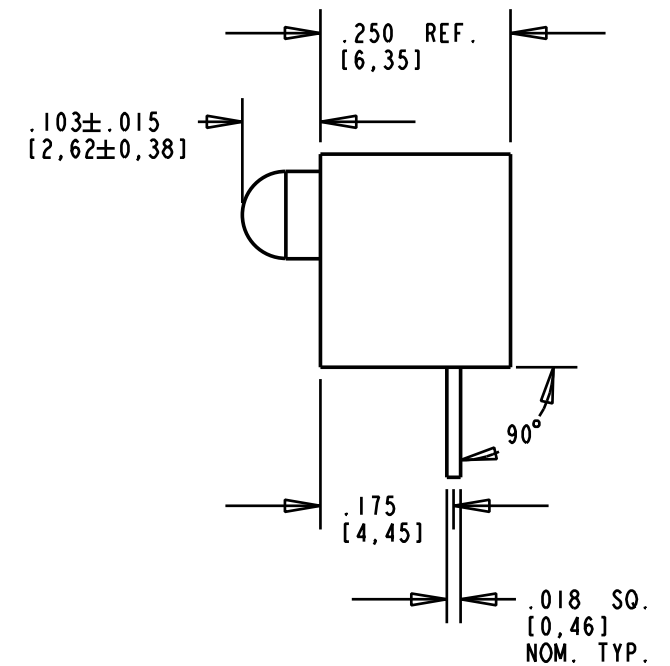
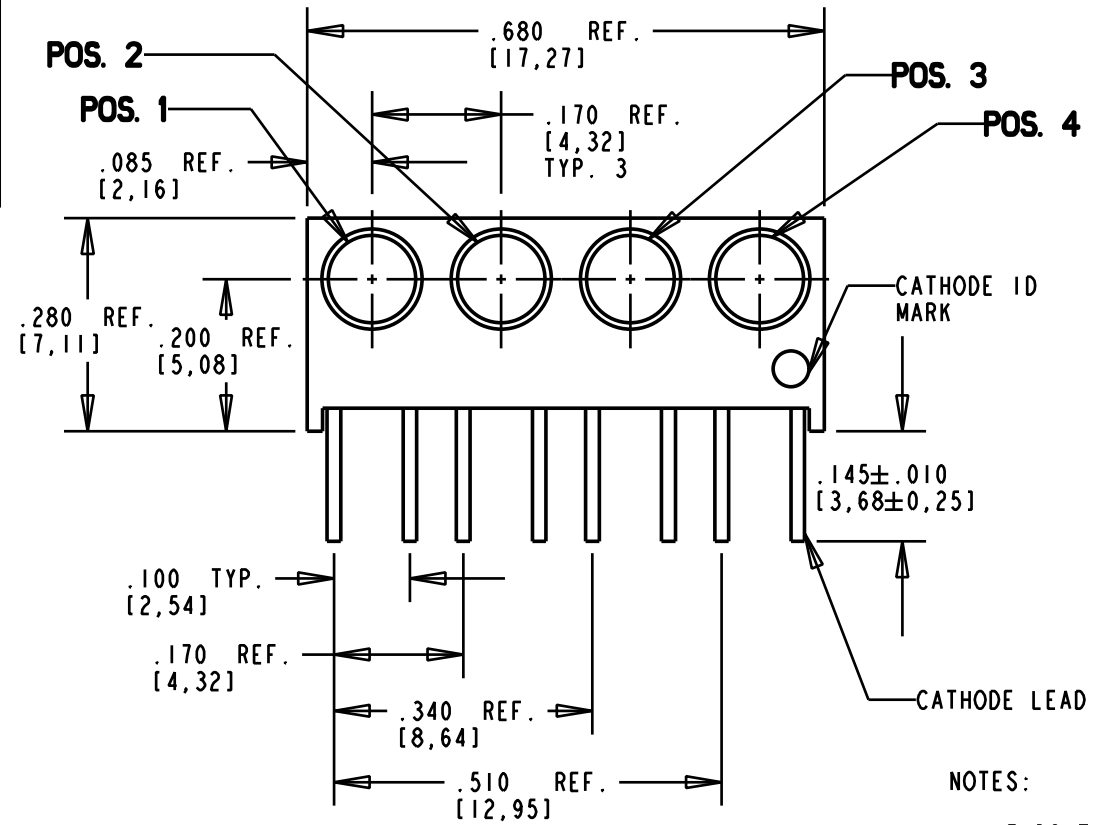
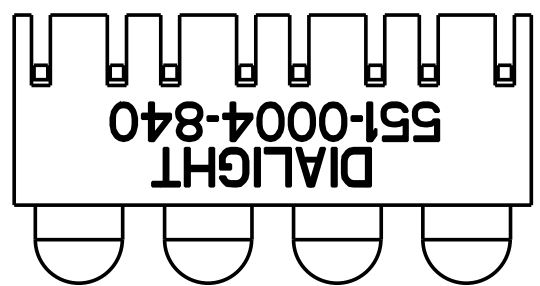


REV.	ECN NO.	REVISIONS	DRN.	CKD.	APP.	DATE
A		NEW RELEASE	JAV			

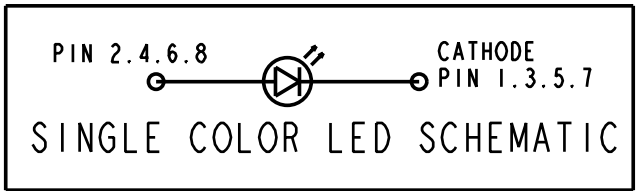
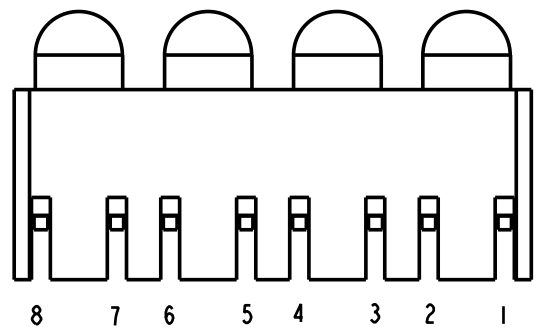
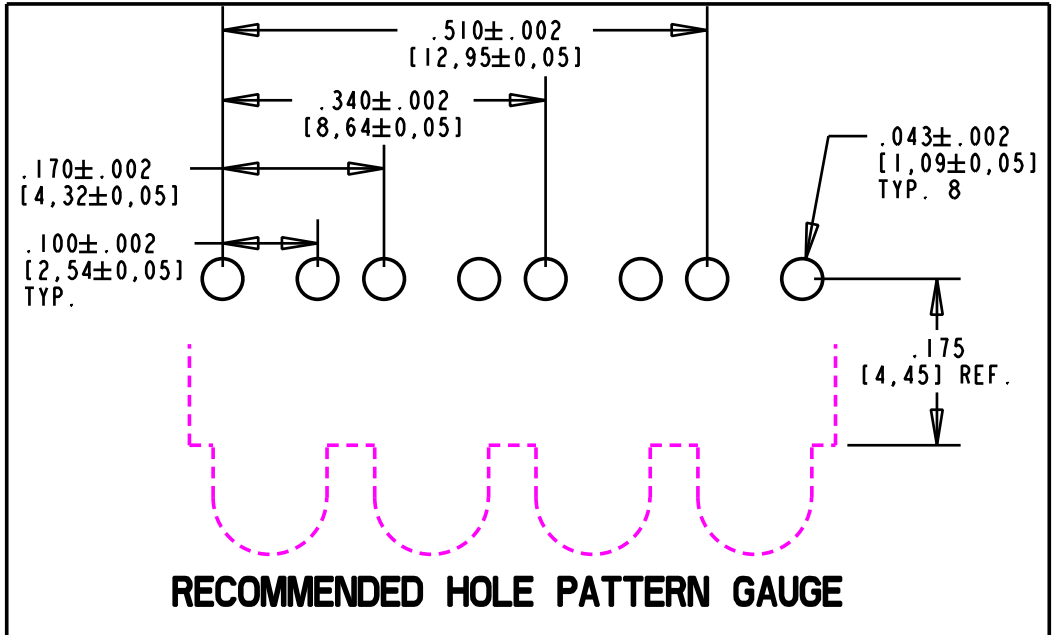
POS.1	POS.2	POS.3	POS.4
GREEN	GREEN	GREEN	RED

OPERATING CHARACTERISTICS AT 25°C AMBIENT						
CHARACTERISTICS	COLOR	MIN	TYP	MAX	UNITS	TEST CONDITIONS
LUMINOUS INTENSITY	GREEN	35	45		mcd	$I_f = 20 \text{ mA}$
	RED	35	45			
FORWARD VOLTAGE	GREEN		2.2	3.0	V	$I_f = 20 \text{ mA}$
	RED		1.9	2.6		
REVERSE CURRENT	GREEN			100	$\mu\text{A}$	$V_R = 5 \text{ V}$
	RED					
PEAK WAVELENGTH	GREEN		565		nm	
	RED		635			
VIEWING ANGLE	ALL		45		Degree	

ABSOLUTE MAXIMUM RATING AT 25°C AMBIENT			
	UNITS	GREEN	RED
CONTINUOUS FORWARD CURRENT	mA	30	30
PEAK FORWARD CURRENT (1/10 DUTY CYCLE, 0.1 ms PULSE WIDTH)	mA	90	90
LEAD SOLDERING TEMPERATURE (5 SEC., 1/16" FROM BODY)	°C	260	
OPERATING TEMPERATURE	°C	-20 TO +100	-55 TO +100
STORAGE TEMPERATURE	°C	-50 TO +100	



- NOTES:
- 1- LEADS TO FIT INTO HOLES SPACED AS PER HOLE PATTERN GAUGE
  - 2- LEADS TO BE FREE OF DEFORMATION AFTER BENDING AND CUTTING
  - 3- LED LEAD DIMENSIONS SHOWN ARE MEASURED AT HOUSING EXIT
  - 4- DIALIGHT PART NUMBER 551-0004-840



THIS DRAWING AND THE CONTENTS HEREIN ARE CONFIDENTIAL AND THE SOLE PROPERTY OF DIALIGHT. REPRODUCTION OF THIS DRAWING OR CONSTRUCTION OF ANY PARTS WITHIN THIS DRAWING ARE FORBIDDEN WITHOUT THE WRITTEN CONSENT OF DIALIGHT.		
SCALE: 4.000 ALL DIM'S IN: INCHES (MM)	DRAWING NUMBER C-17120	REV A
TOLERANCES: UNLESS OTHERWISE SPECIFIED FRACTIONS: ±1/64 DECIMALS (.XX): ±.020 DECIMALS (.XXX): ±.015 DECIMALS (.XXXX): ±.0005 ANGLES: ±3°	TITLE 3MM QUAD LEVEL CBI BLOCK	MATERIAL
FINISH:	1501 ROUTE 34 SOUTH FARMINGDALE, NJ 07727	
FSCM 83330	SHEET 1 OF 1	FAMILY TABLE:

# Mouser Electronics

Authorized Distributor

Click to View Pricing, Inventory, Delivery & Lifecycle Information:

Dialight:

[551-0004-840F](#)