

REV.	ECN NO.	REVISIONS	DRN.	CKD.	APP.	DATE
A		NEW RELEASE	AV			

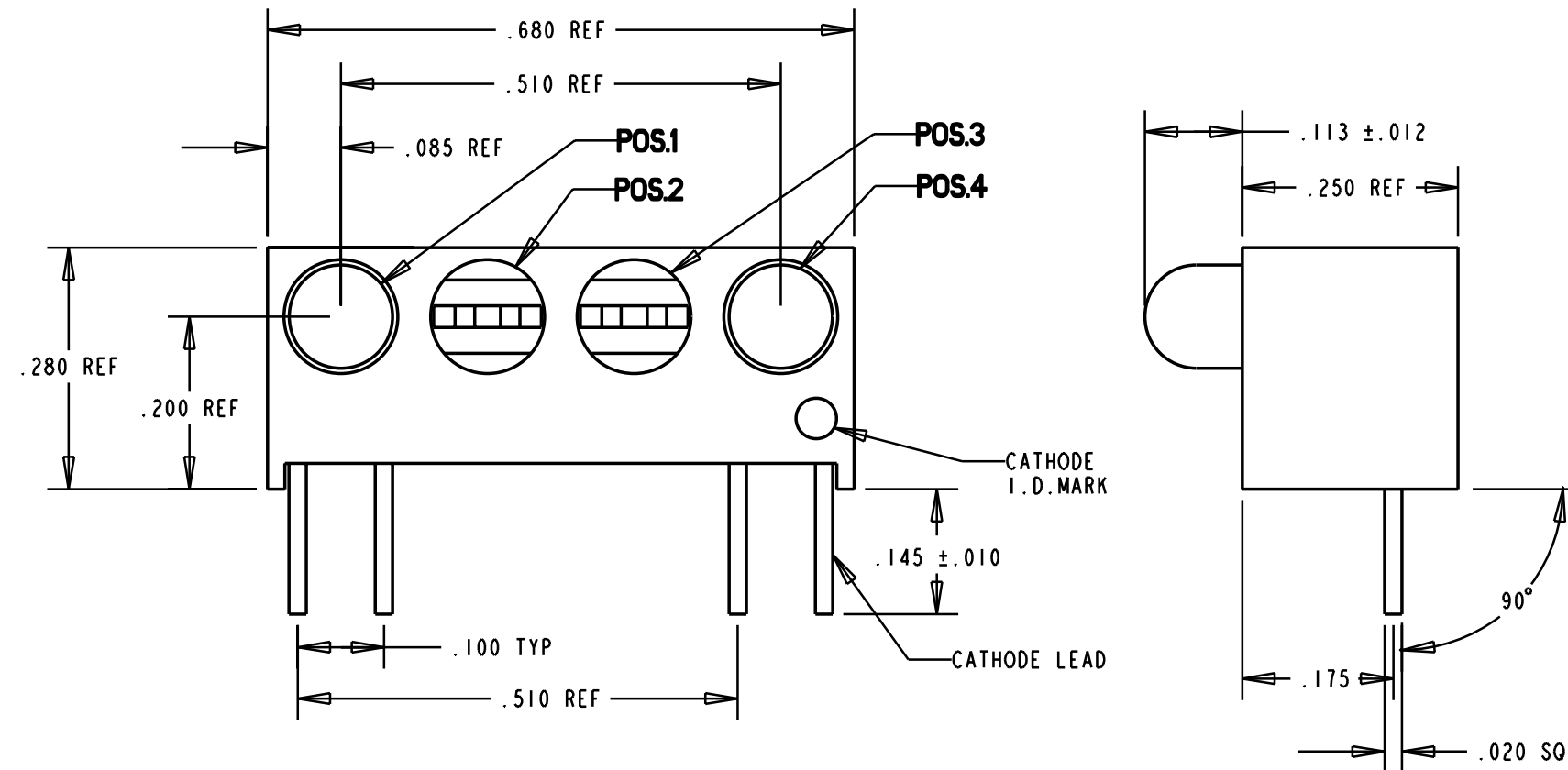
LED COLOR = YELLOW DIFFUSED					
OPERATING CHARACTERISTICS AT 25°C AMBIENT					
CHARACTERISTICS	MIN	TYP	MAX	UNITS	TEST CONDITIONS
LUMINOUS INTENSITY	2.2	6.3		mcd	$I_f = 10 \text{ mA}$
FORWARD VOLTAGE		2.1	3.0	V	$I_f = 10 \text{ mA}$
REVERSE VOLTAGE	3			V	$I_R = 10 \text{ } \mu\text{A}$
PEAK WAVELENGTH		585		nm	
VIEWING ANGLE		45		Degree	
CAPACITANCE		5.0		pf	$V_R = 0 \text{ V}, f = 1 \text{ MHz}$

POS. 1	POS. 2	POS. 3	POS. 4
RED	**BLANK**	**BLANK**	YELLOW

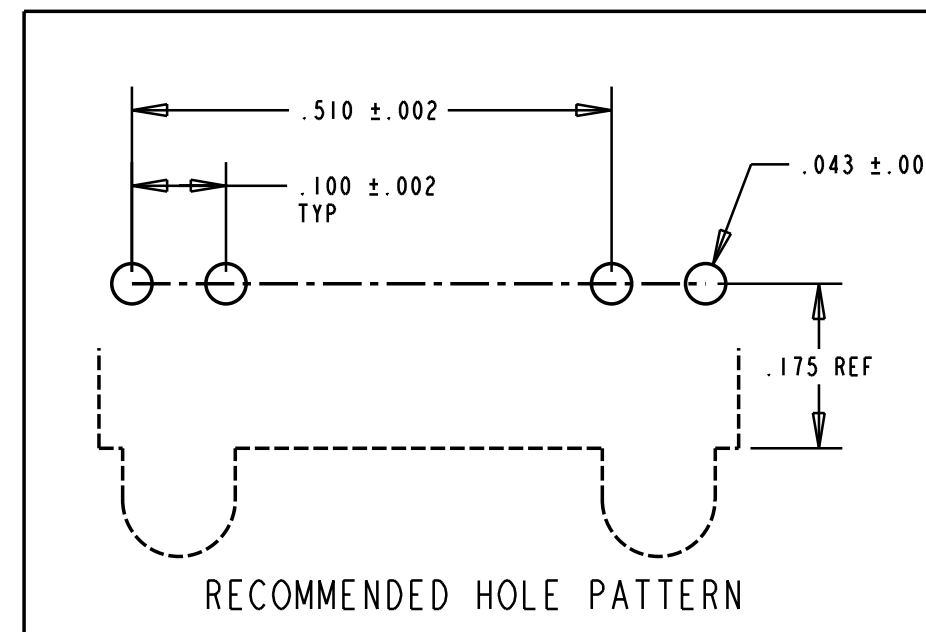
NOTES:

- LEADS TO FIT INTO HOLES SPACED AS PER HOLE PATTERN
- LEADS TO BE FREE OF DEFORMATION AFTER BENDING AND CUTTING
- LED LEAD DIMENSIONS SHOWN ARE MEASURED AT HOUSING EXIT
- DIALIGHT PART NUMBER = 551-0004-832

LED COLOR = YELLOW DIFFUSED		
ABSOLUTE MAXIMUM RATING AT 25°C AMBIENT		UNITS
POWER DISSIPATION		mW
DERATE LINEARLY FROM 50°C		$\text{mA}/^\circ\text{C}$
CONTINUOUS FORWARD CURRENT		mA
PEAK FORWARD CURRENT (1/10 DUTY CYCLE, 0.1 ms PULSE WIDTH)		mA
LEAD SOLDERING TEMPERATURE, 5 SEC., 1/16" FROM BODY		$^\circ\text{C}$
OPERATING TEMPERATURE		$^\circ\text{C}$
STORAGE TEMPERATURE		$^\circ\text{C}$



LED COLOR = RED DIFFUSED					
OPERATING CHARACTERISTICS AT 25°C AMBIENT					
CHARACTERISTICS	MIN	TYP	MAX	UNITS	TEST CONDITIONS
LUMINOUS INTENSITY	3.6	10		mcd	$I_f = 10 \text{ mA}$
FORWARD VOLTAGE		2.0	3.0	V	$I_f = 10 \text{ mA}$
REVERSE VOLTAGE	3.0			V	$I_R = 10 \text{ } \mu\text{A}$
PEAK WAVELENGTH		650		nm	
VIEWING ANGLE		45		Degree	
CAPACITANCE		9.2		pf	$V_R = 0 \text{ V}, f = 1 \text{ MHz}$



LED COLOR = RED DIFFUSED		
ABSOLUTE MAXIMUM RATING AT 25°C AMBIENT		UNITS
POWER DISSIPATION		mW
DERATE LINEARLY FROM 50°C		$\text{mA}/^\circ\text{C}$
CONTINUOUS FORWARD CURRENT		mA
PEAK FORWARD CURRENT (1/10 DUTY CYCLE, 0.1 ms PULSE WIDTH)		mA
LEAD SOLDERING TEMPERATURE, 5 SEC., 1/16" FROM BODY		$^\circ\text{C}$
OPERATING TEMPERATURE		$^\circ\text{C}$
STORAGE TEMPERATURE		$^\circ\text{C}$

THIS DRAWING AND THE CONTENTS HEREIN ARE CONFIDENTIAL AND THE SOLE PROPERTY OF DIALIGHT. REPRODUCTION OF THIS DRAWING OR CONSTRUCTION OF ANY PARTS WITHIN THIS DRAWING ARE FORBIDDEN WITHOUT THE WRITTEN CONSENT OF DIALIGHT.

SCALE 5:1	DRAWING NUMBER	REV
ALL DIM'S IN: INCHES	C-16573	A
TOLERANCES: UNLESS OTHERWISE SPECIFIED	TITLE	
FRACTIONS: ±1/64	1x4 CBI BLOCK	
DECIMALS (.XX): ±.020	MATERIAL	
DECIMALS (.XXX): ±.015		
DECIMALS (.XXXX): ±.010		
ANGLES: ±1°		
FINISH:	Dialight	1913 ATLANTIC AVE. MANASQUAN, N.J. 08736
FSCM 83330	SHEET OF	FAMILY TABLE:

Mouser Electronics

Authorized Distributor

Click to View Pricing, Inventory, Delivery & Lifecycle Information:

Dialight:

[551-0004-832F](#)